

**RAMBOLL**

Bright ideas.  
Sustainable change.

# 72 h transport challenge Kick Off



**Kuva:** Lahden kaupunki

## **12:00 Kick-off and welcome words / Jukka-Pekka Pitkänen, Ramboll**

12:05 Greetings from the organizers / City of Lahti, Finnish Transport Infrastructure Agency, The Regional Council of Päijät-Häme, Uponor, Pelicans, Telia, LAB, LUT

12:30 General information about the 72 h Transport Challenge / Jukka-Pekka Pitkänen, Vili Ampuja, Ramboll

12:45 Formation of teams / Ramboll

12:45 Coffee and sweet

13:00 Publication of the topic / Henna Eskonsipo-Bradshaw, City of Lahti

13:20 Lahti City Center Vision / Johanna Palomäki, City of Lahti

13:40 Accessible Region / Petra Isotalo, Niina Ahlfors The Regional Council of Päijät-Häme

14:00 Winning Team – Janne Laukkanen, Lahti Pelicans

14:15 Further instructions / Ramboll





● **Start**

● **24h**

● **48h**

● **72h**

**THE MOST EXCITING 72H OF THE YEAR STARTS NOW!**

**-JUKKIS PITKÄNEN, RAMBOLL**

# Previous 576 hours...

Tampere 2015



Helsinki 2016



Oulu 2017



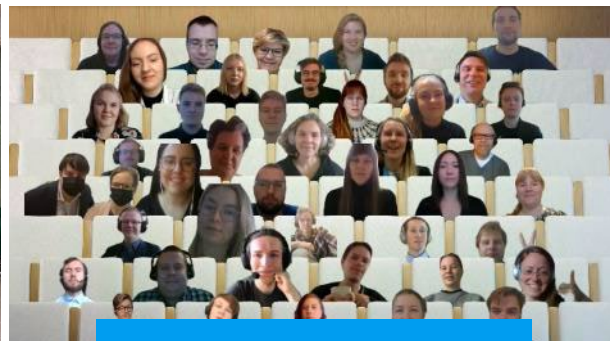
Lappeenranta  
2018



Tampere 2019



Vantaa 2020



Vaasa 2021



Joensuu 2022



**Lahti**

 **Päijät-Hämeen liitto**  
The Regional Council of Päijät-Häme



Väylävirasto  
Trafikledsverket

**uponor** | Moving  
Water



**RAMBOLL**

 **LUT**  
University

 **LAB University of Applied Sciences**

# Poikkiteollisuus kannattaa - kolme eri oppilaitosta edustanut tiimi voitti 72-tuntisen liikennekilpailun



**Pekka Sauri** @pekkasauri · 9h  
#Helsinki: 72 tunnin liikennehaasteesta haetaan uusia liikennehaasteita Helsingin seudulle. Parastaikaa käynnissä.



**Liikennehaasteesta haetaan innovatiivisia liikenn...**  
72 tunnin liikennehaaste on kilpailu, jonka tavoitteena on löytää innovatiivisia ratkaisuja tulevaisuuden liikennejärjestelmään kasvavalla Helsingin seudulla.

1 ❤️ 5



Sisämaan ja keskeisten väliin, pyöräpysäköintialueita, pyöräpostia, pyöräseuran liikennöintilaitteita sekä liikenteen alustana käytettäviä rautatiealustoja. Haasteen perustana kasvavalla seudulla liikennöintilaitteita, jotka helpottavat ja kirkastavat liikennettä. Ratkaisun on tuettava uusia liikennemuotoja ja liikennemuotoja, jotka helpottavat ja kirkastavat liikennettä. Liikennehaaste on kilpailu, jonka tavoitteena on löytää innovatiivisia ratkaisuja tulevaisuuden liikennejärjestelmään kasvavalla Helsingin seudulla.

## LAPPEENRANNAN TULEVAISUUTTA VISIOITIN 72 TUNNIN LIIKENNEHAASTEESSA

KESKIVUOKONA 8. MARRASKUUTA 2017 KALEVA

## Opiskelijat kehittävät tulevaisuuden Oulua

Joukkueet etsivät 72 tunnin aikana ratkaisuja, jotka tukevat kampuksen kehittymistä parhaiten.

**HELSE MURTOVAARA**  
Oulun Oulun Linnanmaan kehitysvälikampanian valittuun ihmisten liikenteeseen, asumiseen ja elinkeinoelämään ennestään vuorokauden 2020 ja 2050? Ja millainen liikennejärjestelmä näkee kampuksen kehittymistä parhaiten?

Näihin kysymyksiin kuusi opiskelijajoukkuetta mietti vastauksia 72 tunnin liikennehaasteen aikana.

**HELSE MURTOVAARA**  
Miten Oulun Linnanmaan kehitysvälikampanian valittuun ihmisten liikenteeseen, asumiseen ja elinkeinoelämään ennestään vuorokauden 2020 ja 2050? Ja millainen liikennejärjestelmä näkee kampuksen kehittymistä parhaiten?

Näihin kysymyksiin kuusi opiskelijajoukkuetta mietti vastauksia 72 tunnin liikennehaasteen aikana.

## Opiskelijat pohtivat Oulussa tulevaisuuden ratkaisuja liikkumisen ja maankäytön kehittämiseen



Oulun yliopiston ja Oulun ammattikorkeakoulun osittain yhteinen 72-tuntin liikennehaaste on nyt ratkaistu. Haasteen tavoitteena on löytää innovatiivisia ratkaisuja tulevaisuuden liikennejärjestelmään kasvavalla Helsingin seudulla.

**Radiohaastattelut:**  
• Radio Pooki  
• 8.12.

## 72 tunnin liikennehaaste on nyt ratkaistu - "En voi kuin ihmetellä"



Uusia innovaatioita Helsingin liikenteeseen - 72 tunnin liikennehaaste käynnistyy huomenna

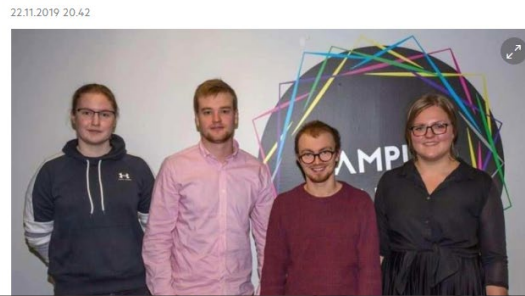


## Opiskelijoilla 72 tuntia aikaa ratkoa liikennehaaste Lappeenrannassa - "Odotamme rohkeita ehdotuksia"



Tampereen 72 tunnin liikennehaaste ratkesi - voittajat toisivat palvelut liikenteen luokse

Tuomariston arvon mukaan voittajajoukkue onnistui luomaan selkeän ja realistisen Tampereen Koilliskeskuksen solmukohtasta. Joukkue koostui tamperelaisista korkeakoulupöytäkirjoista.



Radiohaastattelut:  
• Yle Radio Suomi 7.12.



KALEVA.fi

**JOPERA**  
Koti Knuutilan-kankaalla!  
Valmistus 2018  
LÄMPÖKÄSITELTÄÄN  
56,0 m² 28-1/2 82,0 m² 28-1/2  
72,0 m² 28-1/2 88,0 m² 28-1/2  
84,0 m² 28-1/2 94,0 m² 28-1/2  
96,0 m² 28-1/2 102,0 m² 28-1/2

Liikennehaaste alkoi Oulussa - joukkueilla 72 tuntia aikaa etsiä kampusalueen kehittämistä tukevia ratkaisuja



Oulun Linnanmaan kehitysvälikampanian valittuun ihmisten liikenteeseen, asumiseen ja elinkeinoelämään ennestään vuorokauden 2020 ja 2050? Ja millainen liikennejärjestelmä näkee kampuksen kehittymistä parhaiten?

Näihin kysymyksiin kuusi opiskelijajoukkuetta mietti vastauksia 72 tunnin liikennehaasteen aikana.

Miten Oulun Linnanmaan kehitysvälikampanian valittuun ihmisten liikenteeseen, asumiseen ja elinkeinoelämään ennestään vuorokauden 2020 ja 2050? Ja millainen liikennejärjestelmä näkee kampuksen kehittymistä parhaiten?

Näihin kysymyksiin kuusi opiskelijajoukkuetta mietti vastauksia 72 tunnin liikennehaasteen aikana.

An aerial photograph of a multi-lane highway with heavy traffic congestion. The road is filled with cars, trucks, and a large semi-truck carrying a load of blue pipes. The traffic is moving slowly, with long lines of vehicles in each lane. The highway is divided by a concrete median. The overall scene illustrates the problem of inadequate city development and lack of transport capacity leading to congestion and reduced productivity.

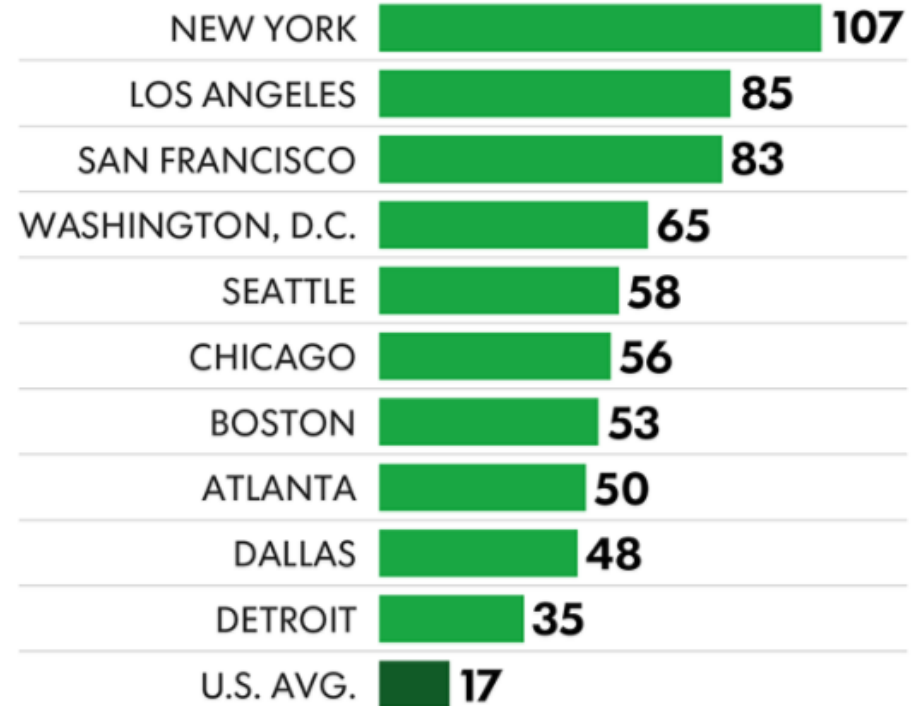
# **INADEQUATE CITY DEVELOPMENT AND LACK OF TRANSPORT CAPACITY = CONGESTION AND REDUCED PRODUCTIVITY**

Top 10 most congested cities: each commuter wastes 65 hours in traffic a year

### PARKING IS PAINFUL

Motorists spend an average of 17 hours and about \$97 per year searching for places to park, according to a recent study. Cities with highest parking costs:

Top 10 cities and U.S. average for annual search time, hours per driver:



© picture-alliance/dpa/U. Baumgarten



**Globally there are ~1,2 billion private vehicles,  
which most of the time are not moving  
(up to 95 % of time cars are parked)**



Source: Uber, 2017  
Image: Outi Jokela, 2017



# AFTERNOON RUSH HOUR IN GURUGRAM (INDIA)



# THE COST IMPACT OF RUSH HOURS IS HUGE



USA  
95 000 M\$  
(0,65 % GDB)

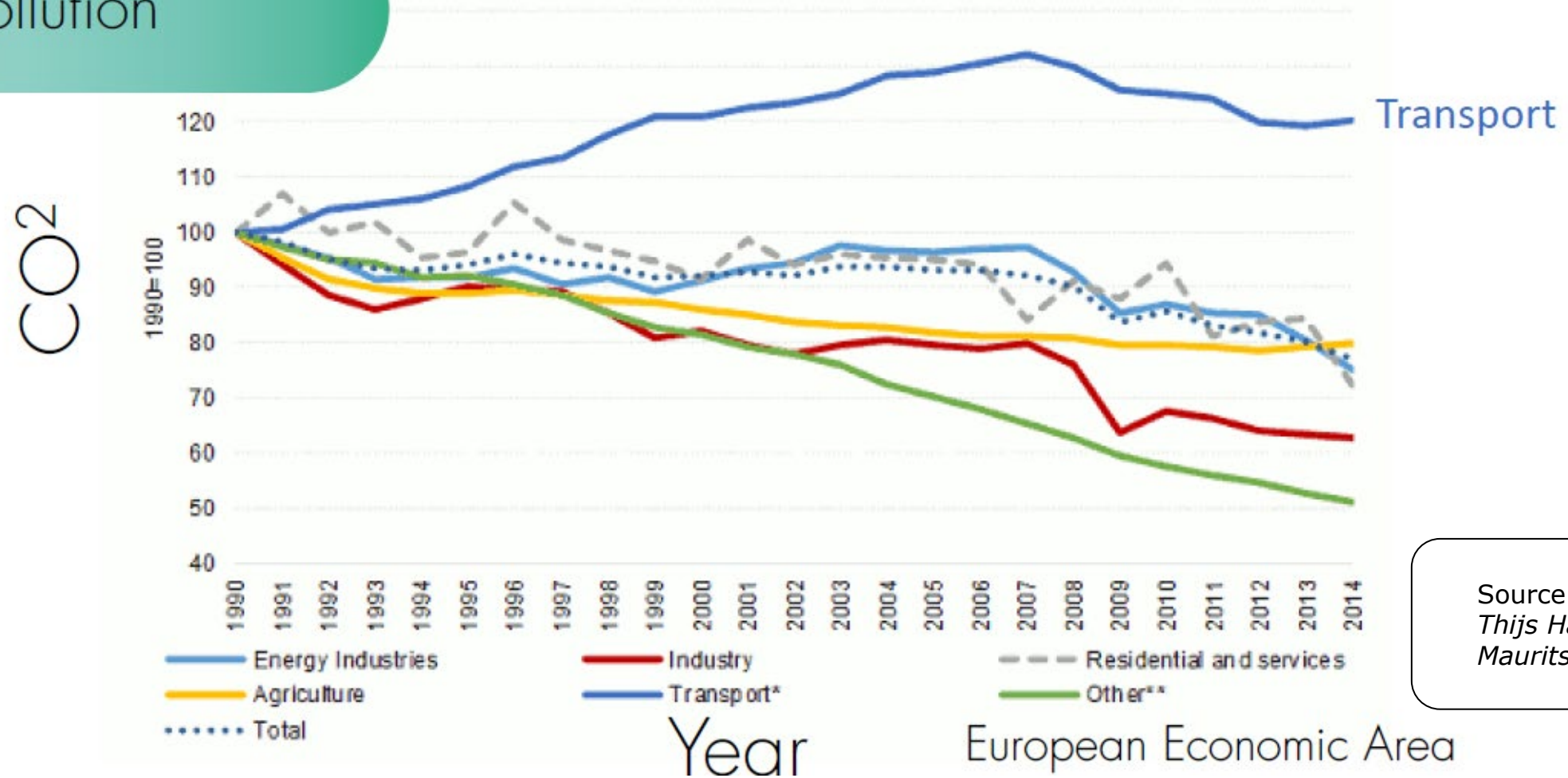
EU  
110 000 M€  
(0,8 % GDB)

Kiina  
11 000 M\$  
(0,1 % GDB)

Intia  
10 000 M\$  
(0,5 % GDB)

# ...AND THE COST OF TIME IS NOT THE ONLY CHALLENGE...

## Pollution



Source:  
Thijs Haselhoff &  
Maurits Houck, 2017

# Trends & new policies that will impact transport and urban planning.



Road user charging



Low emission zones



Life cycle costing and environmental impact costs



Equality, inclusivity and equity



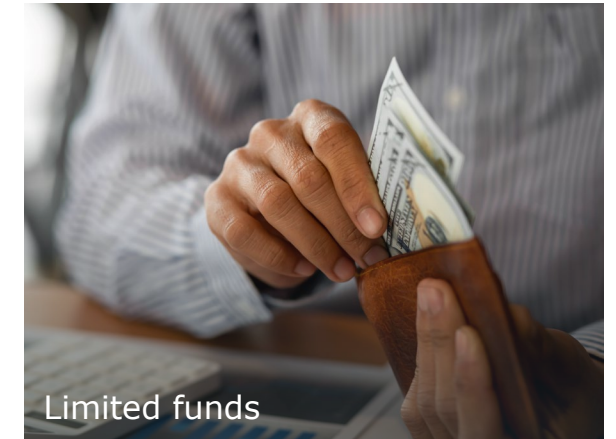
New charging and fueling infrastructure



Digitalization and automation of services and cyber security



Flexibility of mobility systems and networks



Limited funds

# Sustainable Development Goals





# Regenerative Design

Regenerative design and thinking are predicated on the fact that a "degeneration" has taken place. This is particularly in relation to environmental degradation, and especially since the advent of the industrial revolution over the past 200 years.

The regeneration process is one that goes back to a state prior to degeneration, and attempts to bring about that state into the future.

The contrast with sustainable design is that sustainability is founded on 2 flawed premises: one is that the natural environment is a "resource" that we have unfettered access to. The other that we ought to use these natural resources in a measured and controlled manner such that we leave enough for the future generations to continue to use same.

In effect our sustainability efforts have been limited to "being less bad, and doing less harm" to the natural environment.

In contrast, Regenerative Design is based on "doing more good to help heal the damage" hitherto inflicted on the natural environment.

It's about fusion of the positive attributes of the past with those of the future. It's about developing now and in the future in total congruency with the ecological civilization of any site. It is about developing without destroying.

Regenerative Design is not about destroying but leaving enough for the future generations to also destroy, but is an attitude which puts an end to sustainability's vicious circle of destruction.

Regenerative Worldview, from which regenerative thinking and design stem, is a system of thinking with a varied and wide ecosystem of ideas and thoughts which fuse the interrogative and skepticism of science and knowledge, with the wisdom and insight of nature.

## The First Nordic Swan Ecolabel Primary School in Denmark

In collaboration with SKALA Architects, BO-HUS, ETN Arkitekter, Autens and MOE, Henning Larsen and Rambøll have won the competition for a new school in Sundby on Lolland-Falster. With the awarding of the Nordic Swan Ecolabel, the school ensures both a healthy and productive learning environment for all its students.

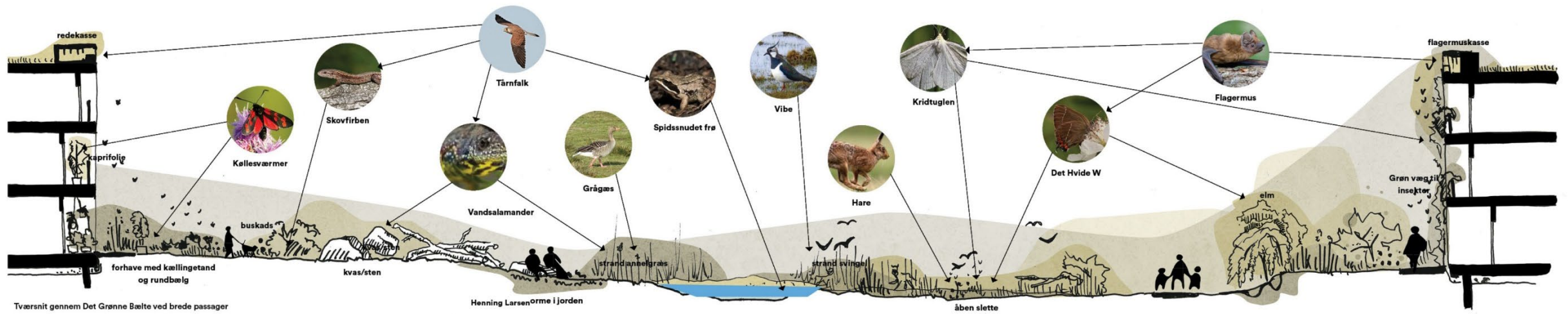
The New School has been awarded the Nordic Swan Ecolabel, making it the first Primary School in Denmark to achieve this status. The label is awarded based on a variety of environmental considerations that include both sustainability factors such as low-emissions, energy consumption, and waste as well as other health factors such as ventilation, daylight, noise, and chemical exposure.

Project visualisation from Henning Larsen

An architectural rendering of a modern residential development. The scene is set in a lush, natural landscape with tall grasses, trees, and a small stream. In the foreground, a wooden boardwalk winds through the field. People are shown in various activities: a family sits on a wooden bench, a woman and child walk, and a group of people are gathered around a wooden table with baskets of fruit. In the background, several modern buildings with large windows and balconies are visible. One building has a person on a balcony. The sky is filled with dramatic, grey clouds, and the overall atmosphere is one of a harmonious blend of nature and modern architecture.

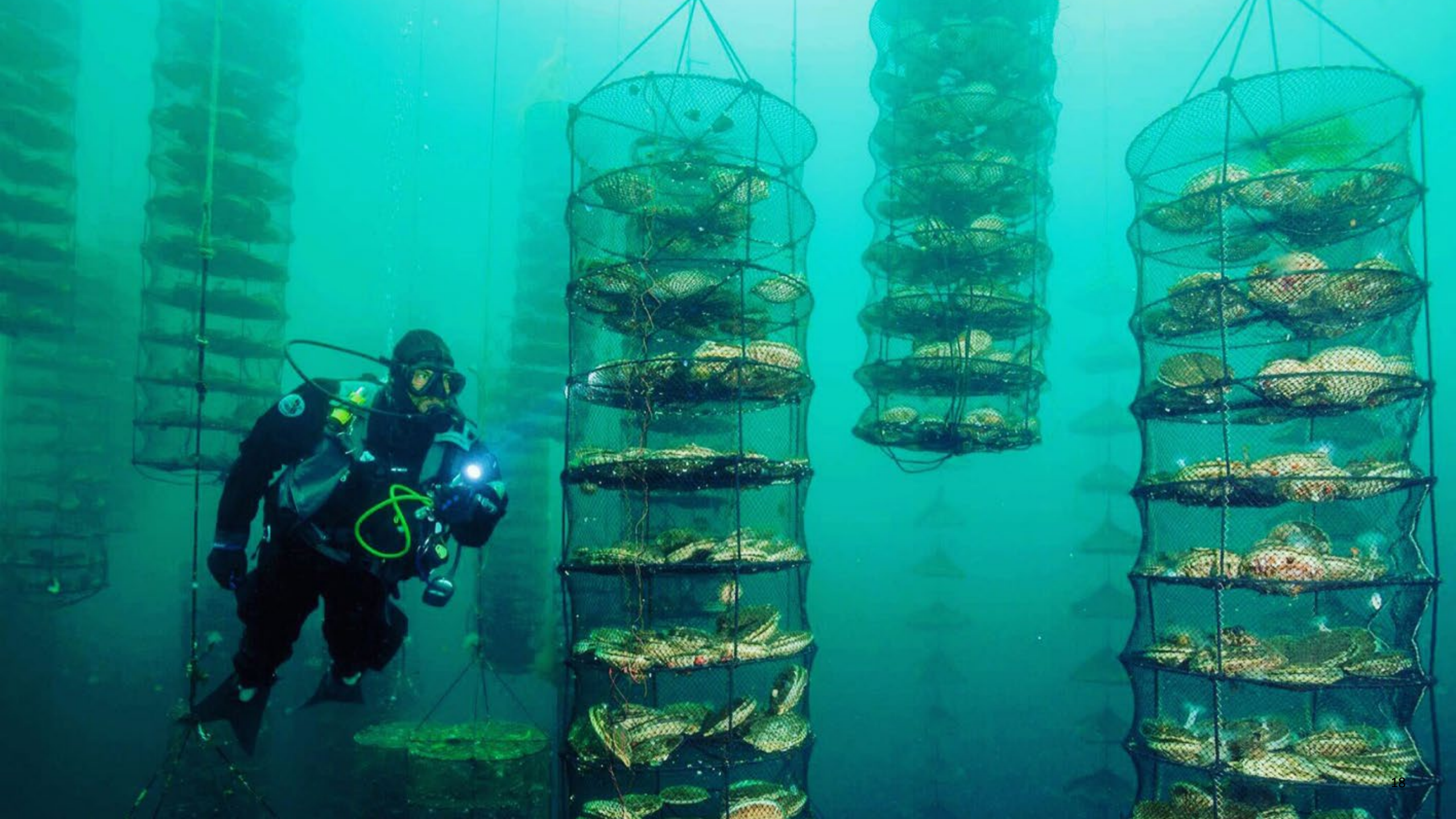
With dialogue and respect for landscape

# Better for nature









# These then translate into Smart Mobility's Four Cornerstones

## Accessibility

- Providing better access to mobility for all users, inclusive of age, income, gender, disability status, and geographical location.



## Safety

- Improving traffic safety for all users with a focus on the most vulnerable groups, such as pedestrians, bicyclists, children, women, elderly, and people with reduced mobility.



## Efficiency

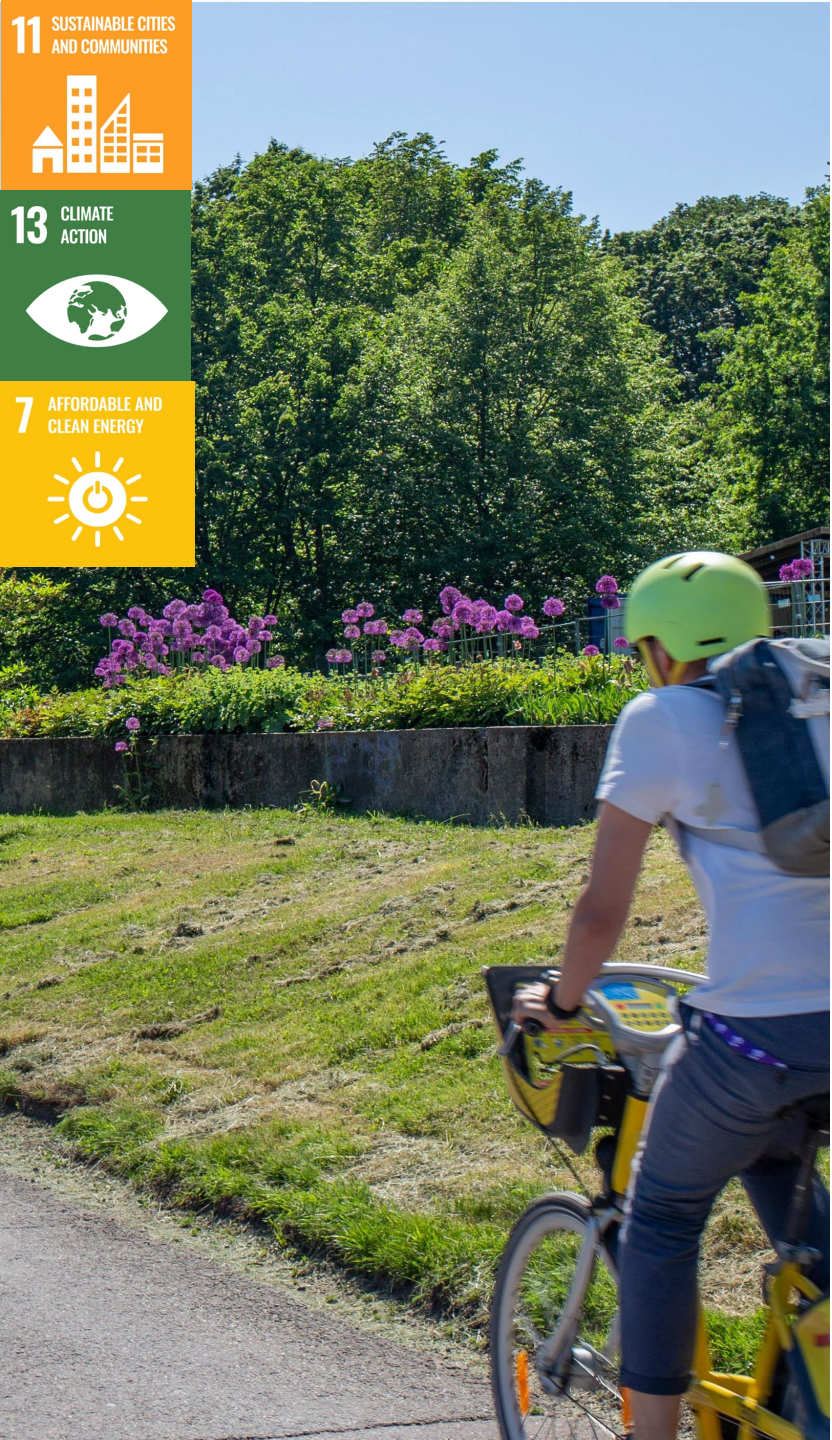
- Ensuring more efficient uses of resources – including energy, technology, space, institutions and regulations.



## Green

- Securing reductions in CO2, GHG emissions, and noise from transport, thereby improving air quality and public health.





# Route 13, Ithaca, NY Corridor Boulevardization - USA

## Challenge

The current design of the Route 13 corridor in Ithaca, New York prioritizes vehicular traffic flow over pedestrian and bicycle access, leading to safety concerns and a lack of connectivity across the highway.

## Our approach

Ramboll provided its global expertise to the redesign of the Route 13 corridor through Ithaca, New York. The Route 13 Boulevardization project envisions a comprehensive plan for converting Route 13 into an urban boulevard.

## Impact

### Accessibility

- Providing improved connectivity across the highway between neighborhoods of different economic levels, physical abilities, age and the public lakefront

### Safety

- Analysis helps in providing safer roads by reconfiguration of Route 13

### Efficiency

- The project helps in providing efficient infrastructure with a design that better supports safer speed limits and creates a more vibrant and livable community

### Green

- Promoting walking, bicycling, and public transportation and prioritizes non-motorized access as part of the design approach



# Transport Planning and Design for Punggol Digital District - Singapore

## The Challenge

Punggol Digital District (PDD) brings together University Campus and Business Park spaces to create Singapore's first truly smart district. PDD will not just house the key growth industries of the digital economy like cybersecurity and digital technology but will also be an inclusive and green lifestyle destination for the surrounding community.

## Our approach

We integrated transport master planning and design elements (eg. last mile connectivity, shared parking, AV shuttles) with our Ramboll's respective Structural, Landscaping, Environmental and Buildings teams to create a holistic Transit Orientated Development that will be a benchmark for Car-Lite planning in Singapore.

## Impact

### Accessibility

- A car-lite precinct that allows everyone to travel with ease through improved access to public transport nodes and services for all users

### Safety

- Pedestrian/ cyclist circulation and connectivity have been carefully designed and planned to either design-out or mitigate conflict points with vehicular traffic

### Efficiency

- Integrated master planning and technology can help create a more liveable and sustainable environment for the community at a local district level, with shared spaces between industry and academia

### Green

- A Smart Energy Grid will not only enable consumers to adopt clean sources of energy for daily use (e.g charging electric vehicles), but also facilitate greater energy efficiency and savings (e.g through smart metering)

# THE ART OF MULTIDISCIPLINARY, HOLISTIC URBAN PLANNING



**Let's Break the silos!**



**12:05 Greetings from the organizers / City of Lahti, Finnish Transport Infrastructure Agency, The Regional Council of Päijät-Häme, Uponor, Pelicans, Telia, LAB, LUT**

12:30 General information about the 72 h Transport Challenge / Jukka-Pekka Pitkänen, Vili Ampuja, Ramboll

12:45 Formation of teams / Ramboll

12:45 Coffee and sweet

13:00 Publication of the topic / Henna Eskonsipo-Bradshaw, City of Lahti

13:20 Lahti City Center Vision / Johanna Palomäki, City of Lahti

13:40 Accessible Region / Petra Isotalo, Niina Ahlfors The Regional Council of Päijät-Häme

14:00 Winning Team – Janne Laukkanen, Lahti Pelicans

14:15 Further instructions / Ramboll



# Lahti



uponor

Moving  
> Water



LUT  
University



Päijät-Hämeen liitto  
The Regional Council of Päijät-Häme

Väylävirasto  
Trafikledsverket



LAB University of  
Applied Sciences





# Väylävirasto

*A well-functioning transport network promotes Finland's well-being, competitiveness and sustainable growth.*

We are looking forward to good team working and innovative solutions.

Enjoy the learning process!

[Introduction video](#)

Kaisa Reunanen-Krause and Jukka Peura



Finnish Transport  
Infrastructure Agency



**12:30 General information about the 72 h Transport Challenge / Jukka-Pekka Pitkänen,  
Vili Ampuja, Ramboll**

12:45 Formation of teams / Ramboll

12:45 Coffee and sweet

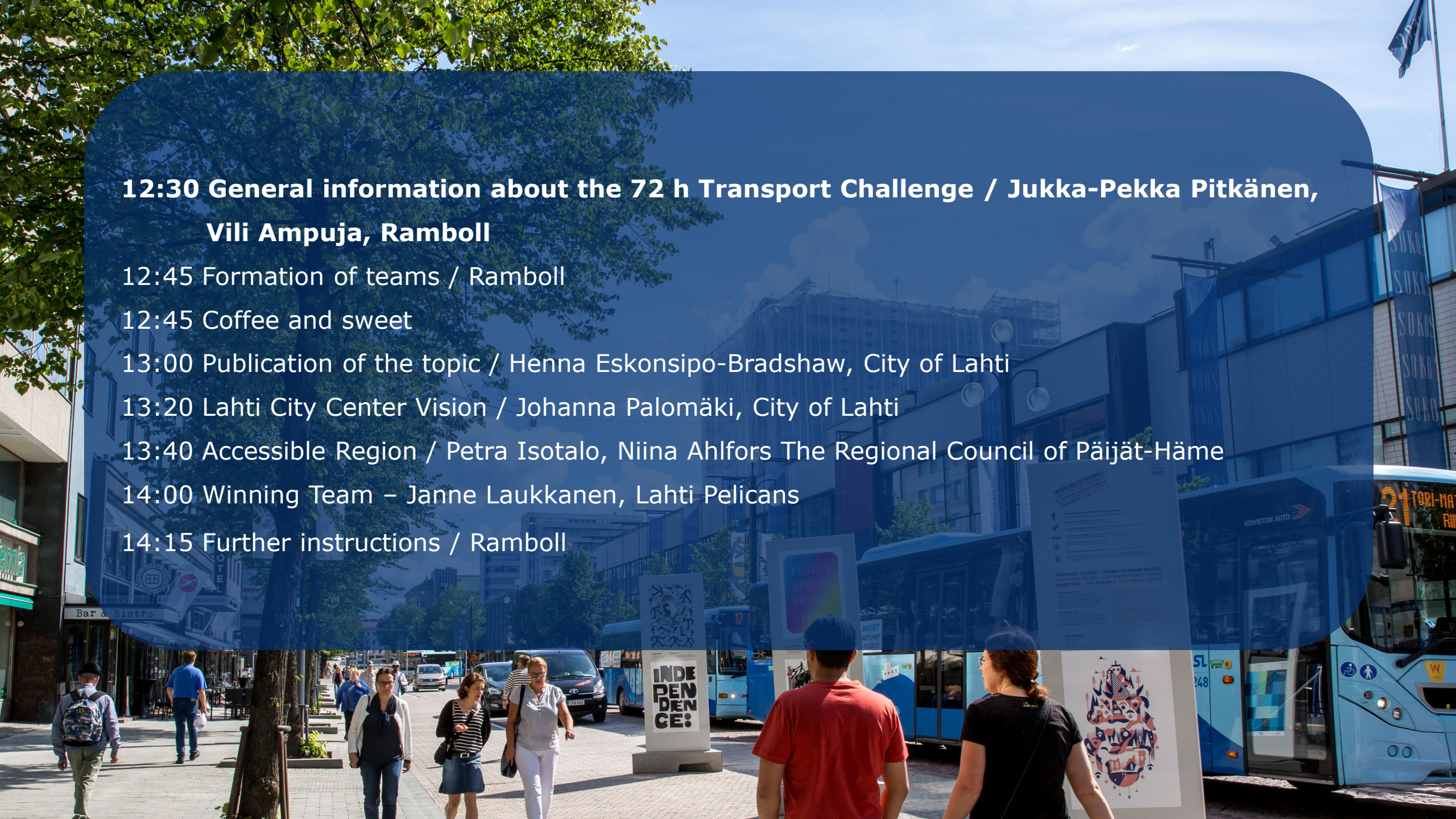
13:00 Publication of the topic / Henna Eskonsipo-Bradshaw, City of Lahti

13:20 Lahti City Center Vision / Johanna Palomäki, City of Lahti

13:40 Accessible Region / Petra Isotalo, Niina Ahlfors The Regional Council of Päijät-Häme

14:00 Winning Team – Janne Laukkanen, Lahti Pelicans

14:15 Further instructions / Ramboll



# 72 transport challenge

## win-win situation for each party

- The Challenge enables new ideas and innovations
- City of Lahti, Finnish Transport Infrastructure Agency, The Regional Council of Päijät-Häme, Uponor, Pelicans and Telia receive new ideas for developing cities, regions and transportation
- Students get to practise project working on a real case
- Students are granted with credits
- The competition creates connections between the city, region, students, universities and companies
- Positive visibility for the urban planning and transportation planning field

# TUESDAY 7.11.

*Isku Areena, Svinhufvudinkatu 29, Pelicans Lobby*

**11:00** Lunch

**12:00** Kick-off and welcome words / Jukka-Pekka Pitkänen, Ramboll

**11:45-  
13:00**

**12:05** Greetings from the organizers / City of Lahti, Finnish Transport Infrastructure Agency, The Regional Council of Päijät-Häme, Uponor, Pelicans, Telia, LAB, LUT

**12:30** General information about the 72 h Transport Challenge/ Vili Ampuja, Ramboll

**12:45** Formation of teams / Vili Ampuja, Ramboll

**12:45** Coffee

**13:00** Publication of the topic / Henna Eskonsipo-Bradshaw, City of Lahti

**13:00-  
13:15**

**13:20** Lahti City Center Vision / Johanna Palomäki, City of Lahti

**13:40** Accessible Region/ Petra Isotalo, The Regional Council of Päijät-Häme

**14:00** Winning Team / Janne Laukkanen, Pelicans

**14:20** Further instructions / Ramboll

**14:30-  
22:00**

Working spaces (Lahti Campus)

# WEDNESDAY 8.11.

<b>8:30-10:00</b>	<p><i>Lahti Campus, Mukkulankatu 19, Room A122</i> <i>Coffee</i></p> <p><b>08:30</b> Lahti Livable City / Miikka Venäläinen, City of Lahti <b>08:50</b> Future mobility /Kaisa Reunanen-Krause, Finnish Transport Infrastructure Agency <b>09:10</b> Smart Futures / Andy Brahney, Ramboll</p> <p>Further instructions/ Ramboll</p>
<b>10:00-13:00</b>	<p>Clinics: City of Lahti, Uponor, Telia (Lahti Campus, Mukkulankatu 19, A122, A155, C215)</p>
<b>11:30-13:00</b>	<p>Sparring (Lahti Campus, Mukkulankatu 19)</p>
<b>8:00-22:00</b>	<p>Working spaces (<i>Lahti Campus</i>)</p>



# THURSDAY 9.11.

<b>8:00-22:00</b>	Working spaces ( <i>Lahti Campus</i> )
<b>13:00-16:00</b>	<i>Lahti Science Park, Niemenkatu 73 , Aalto auditorium</i> Rehearsal presentations

# FRIDAY 10.11.

<b>8:00</b>	<i>Sibeliustalo, Ankkurikatu 7, meeting room Kuusi</i> Return of the written assignment and presentation of the competition work
<b>8:15-11:15</b>	Assignment presentations
<b>11:15-12:30</b>	Jury scores works — Lunch break / free time
<b>12:30-13:30</b>	Feedback, winner disclosure and award ceremony



# Jury and evaluation of the entries

- The winning entry is selected by pre-formed jury
- Each judge rate the entries based on predetermined criteria
- The entry awarded the most jury points wins and the winning team is awarded
- The jury will be chaired by Henna Eskonsipo-Bradshaw whose vote will rule in the event of a tie

- **City of Lahti:** Henna Eskonsipo-Bradshaw, Johanna Palomäki, Miikka Venäläinen
- **Finnish Transport Infrastructure Agency:** Kaisa Reunan-Krause, Jukka Peura
- **The Regional Council of Päijät-Häme:** Petra Isotalo, Niina Ahlfors
- **Uponor:** Teemu Salminen
- **Pelicans:** Lauri Pöyhönen
- **Telia:** Thomas Michelsson
- **LAB:** Raine Vihelmaa
- **LUT:** Ville Uusitalo
- **Ramboll:** Vili Ampuja

# EVALUATION CRITERIA (a total of 100 points)

**Responding to objectives 25 p**

**Innovativeness and vision 20 p**

**Utilization of media 15 p**

**Feasibility 10 p**

**Report 10 p**

**Presentation 10 p**

**Team work 10 p**





# #72tuntia – 72 h Transport challenge in social media

- The official hashtags of the challenge are **#Lahti72h** and **#liikennehaaste**, and these are also shared with the media
- The organisers posts daily on the situation of the challenge
- Teams should share their experiences through social media — **there are special prizes for the most active people, the best photos and posts!**



# The Prize

- The winning team will be rewarded with a two-day "Liveable Cities" excursion to Copenhagen. The prize includes transportation (flights and train tickets), accommodation in double rooms for 2 people, transportation in Copenhagen, and meals.
- The excursion will be carried out in the early months of 2023 (the exact timing will be agreed upon with the winning team).

**12:45 Formation of teams / Ramboll**

**12:45 Coffee and sweet**

13:00 Publication of the topic / Henna Eskonsipo-Bradshaw, City of Lahti

13:20 Lahti City Center Vision / Johanna Palomäki, City of Lahti

13:40 Accessible Region / Petra Isotalo, Niina Ahlfors The Regional Council of Päijät-Häme

14:00 Winning Team – Janne Laukkanen, Lahti Pelicans

14:15 Further instructions / Ramboll



# Formation of teams

- Teams have been formed with students from different universities and majors
- **Each team picks a name for the team**
- **Each team picks a projects manager from the team,** whose responsibilities include:
  - Contact person of the group
  - Deliver short reports to the organiser about the progress and atmosphere in the group. The reports will be submitted at the end of each day (Tue-Thu). The reports will be forwarded to the panel of judges. A short, informal reporting is adequate
  - Ask at least one group member to join the WhatsApp group



**13:00 Publication of the topic / Henna Eskonsipo-Bradshaw, City of Lahti**

13:20 Lahti City Center Vision / Johanna Palomäki, City of Lahti

13:40 Accessible Region / Petra Isotalo, Niina Ahlfors The Regional Council of Päijät-Häme

14:00 Winning Team – Janne Laukkanen, Lahti Pelicans

14:15 Further instructions / Ramboll



# The Challenge:

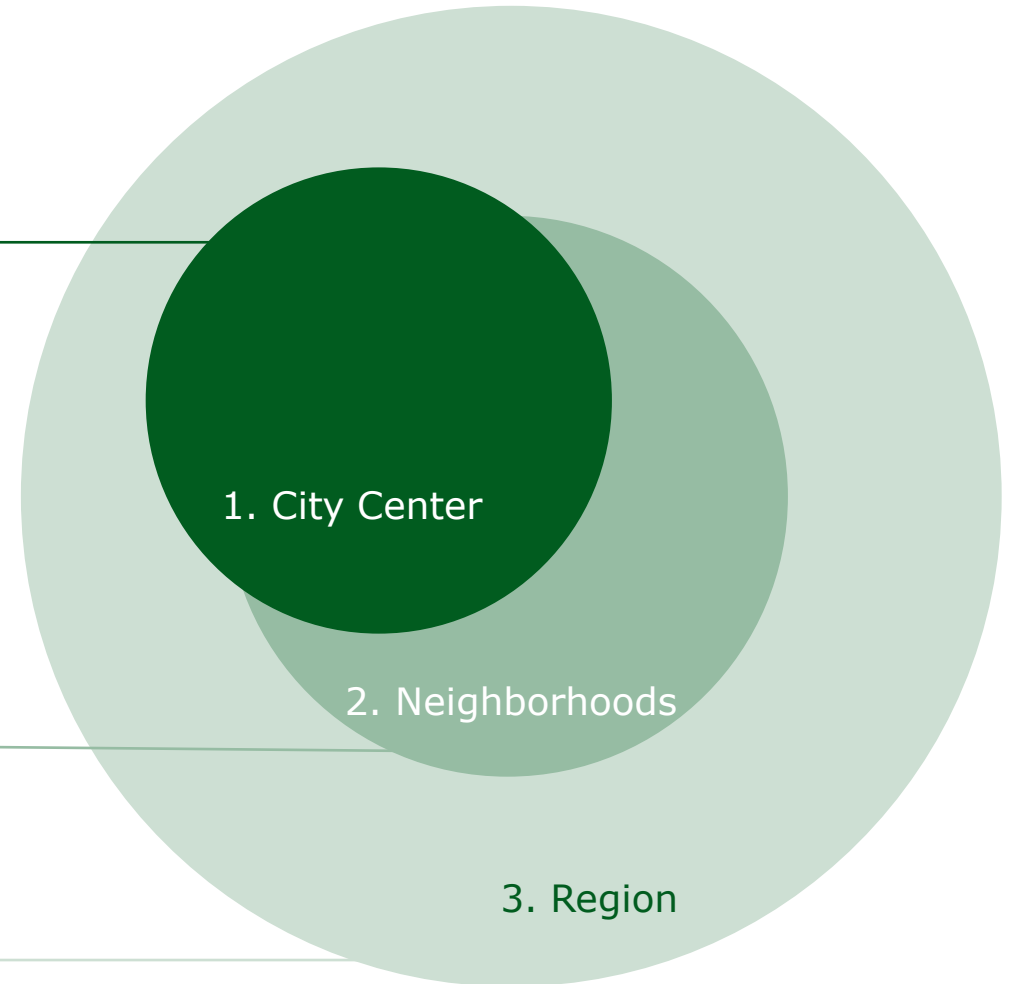
**1. In 2040, Lahti city centre has been recognized as one of the most interesting and sustainable centres in Finland – “Lahes täydellinen keskusta”. It has been praised for:**

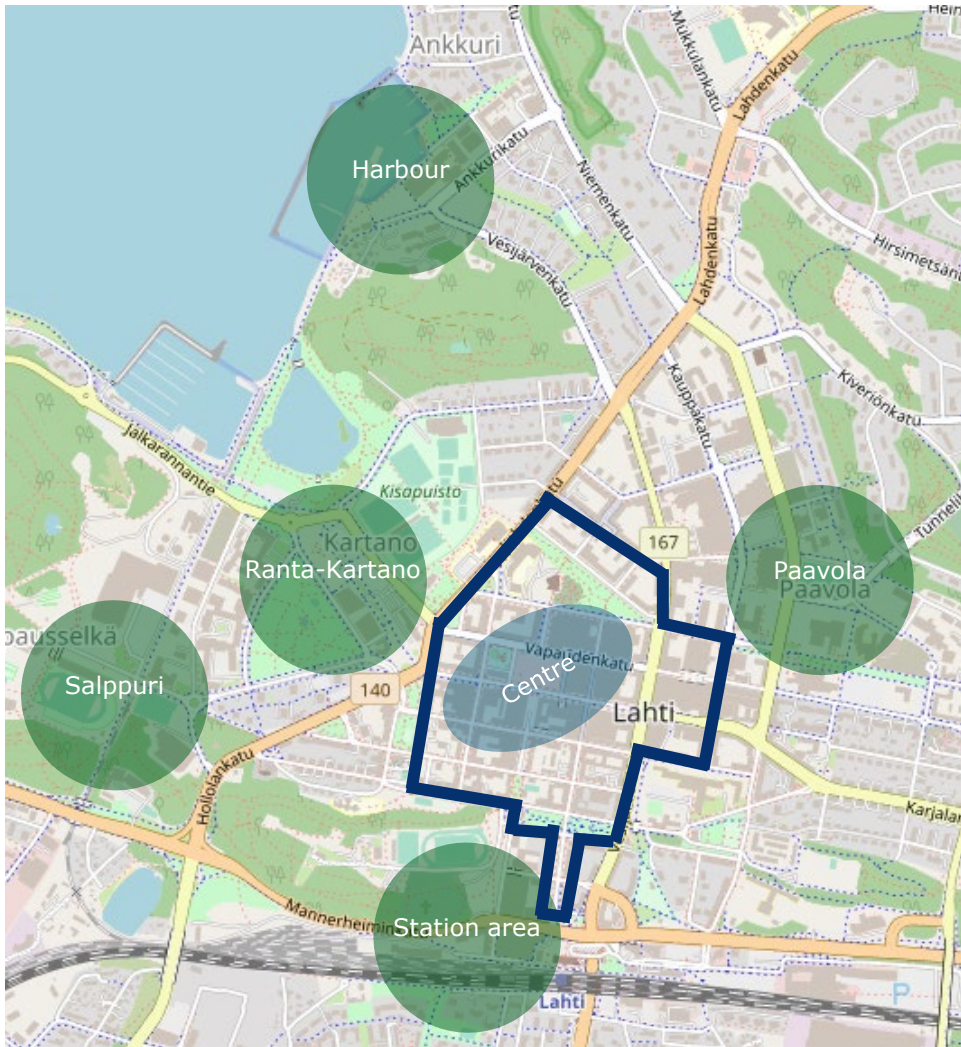
- On adapting to climate change
- Lively city life, culture and events
- Year-round vibrant business and retail
- Sport opportunities or other activities accessible to everyone
- Urban green solutions and biodiversity

**2. How the neighborhood is connected to the city center?**

- Transport solutions
- Mental connectivity

**3. How the centre is linked to the whole region both mentally and physically?**





# Deliverables

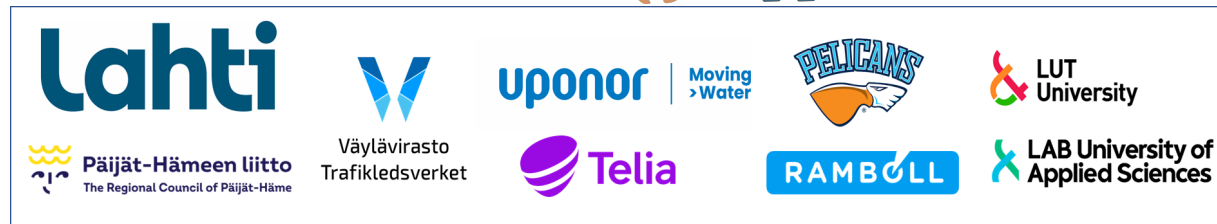
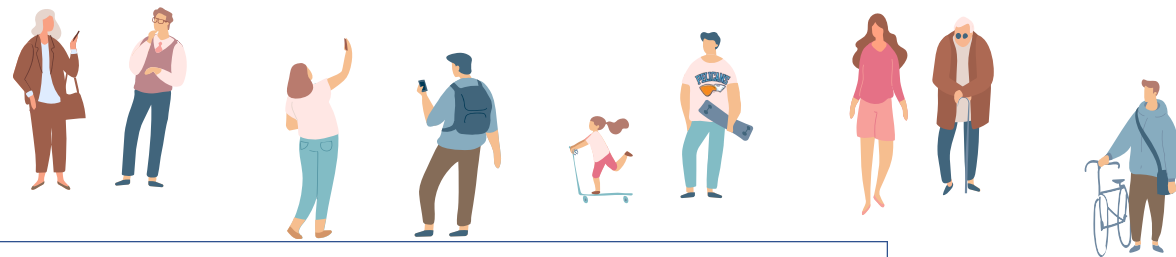
## The city centre concept

1. Why the city centre is one of the most interesting and sustainable city centres in Finland: What are the main concepts? What kind of innovations have been made?
2. How the city centre is connected to the chosen "island" and the region. Create a profile and build a small concept around one attraction which creates the spirit and the brand of the area.

## User stories

Template – Describe through two short stories how a resident and a visitor experience the concept:

- Story 1. An ordinary day in the Lahti region (resident's viewpoint)
- Story 2. A special day in the Lahti region (visitor's viewpoint)





Lahti

# *Welcome to Lahti City Challenge!*

7.11.2023

Henna Eskonsipo-Bradshaw,  
Director of Economic Development





***Sports city  
since 1922***





***Official university city since 2019***





***Growing international student city***

A blue bus is shown from a side-rear perspective. On its side, there is a large green graphic of a hand with fingers spread, pointing upwards. To the left of the hand, there is a logo for 'LAHTI EUROPEAN GREEN CAPITAL' featuring a stylized leaf and stars. Above the bus, the text 'KOIVISTON AUTO' is visible. The bus is parked on a street with snow on the ground and trees in the background.

***What kind of city  
centre does Lahti  
have in 2024?***



***RACE is on for 2040!***

*Enjoy the challenge!*



# The Challenge:

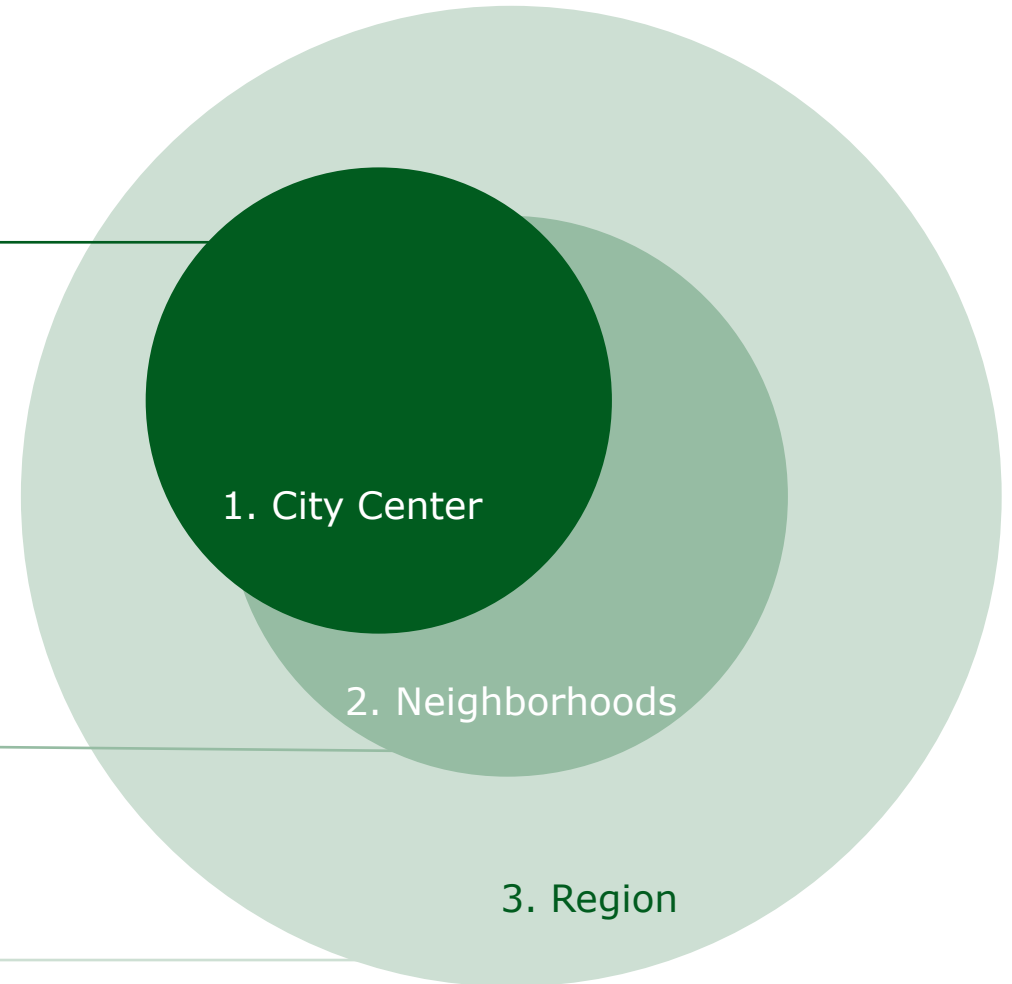
**1. In 2040, Lahti city centre has been recognized as one of the most interesting and sustainable centres in Finland – “Lahes täydellinen keskusta”. It has been praised for:**

- On adapting to climate change
- Lively city life, culture and events
- Year-round vibrant business and retail
- Sport opportunities or other activities accessible to everyone
- Urban green solutions and biodiversity

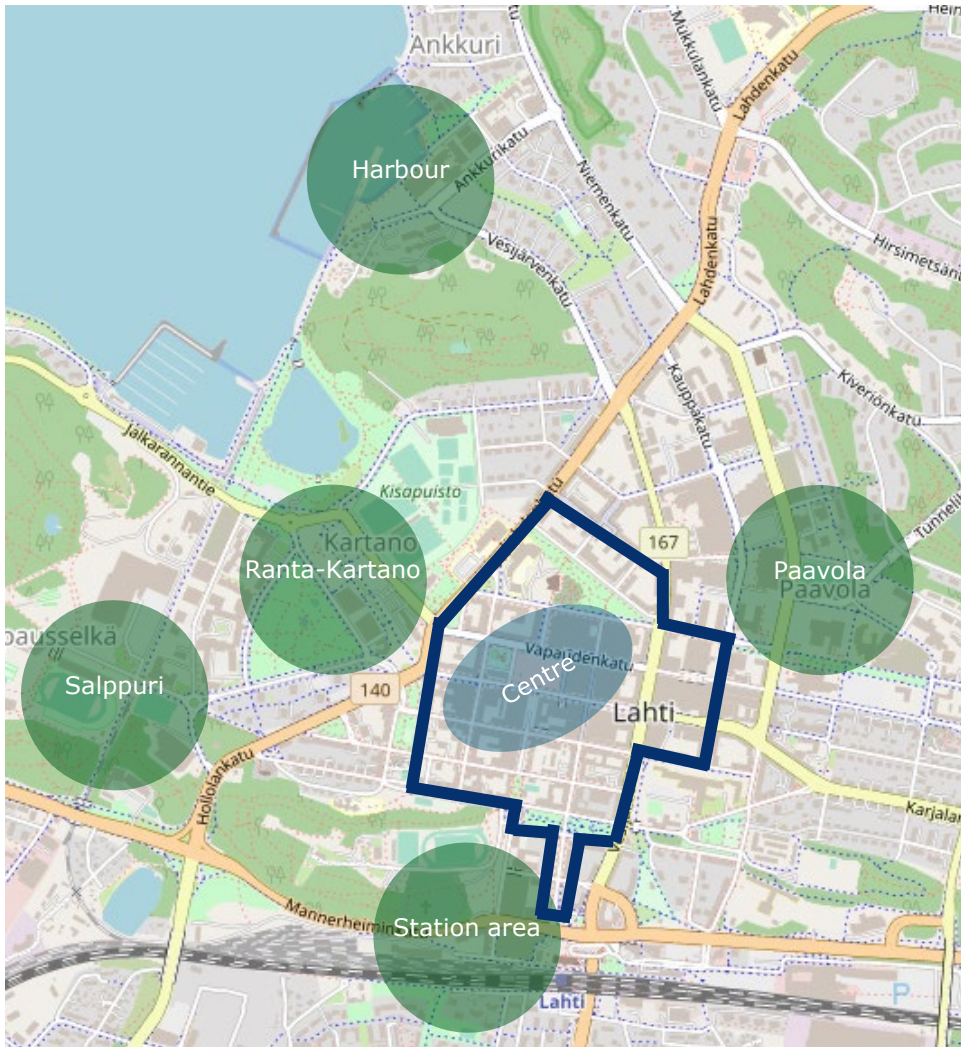
**2. How the neighborhood is connected to the city center?**

- Transport solutions
- Mental connectivity

**3. How the centre is linked to the whole region both mentally and physically?**







# Deliverables

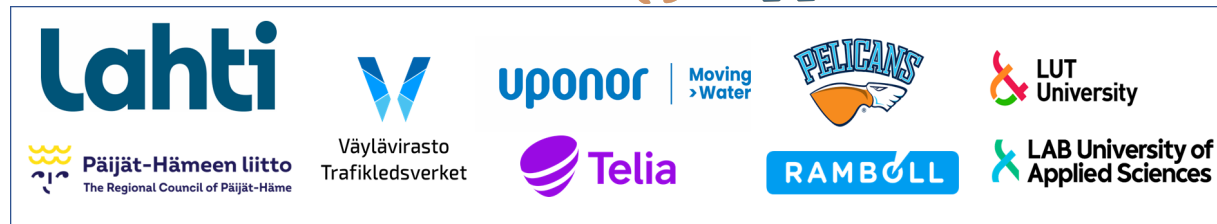
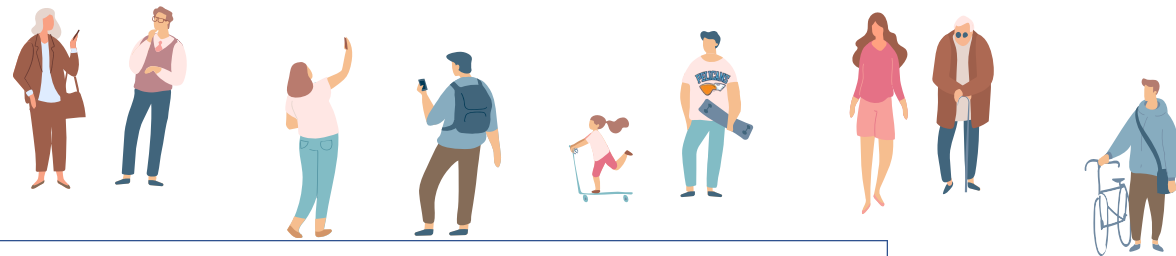
## The city centre concept

1. Why the city centre is one of the most interesting and sustainable city centres in Finland: What are the main concepts? What kind of innovations have been made?
2. How the city centre is connected to the chosen "island" and the region. Create a profile and build a small concept around one attraction which creates the spirit and the brand of the area.

## User stories

Template – Describe through two short stories how a resident and a visitor experience the concept:

- Story 1. An ordinary day in the Lahti region (resident's viewpoint)
- Story 2. A special day in the Lahti region (visitor's viewpoint)



# Ranta-Kartano

## Now

- Connects the centrum to the harbour area
- Restaurants and a grocery store
- Centralized parking facility completed
- Next to Kisapuisto Sport Park and historical museym
- The old bus station is a landmark of the area

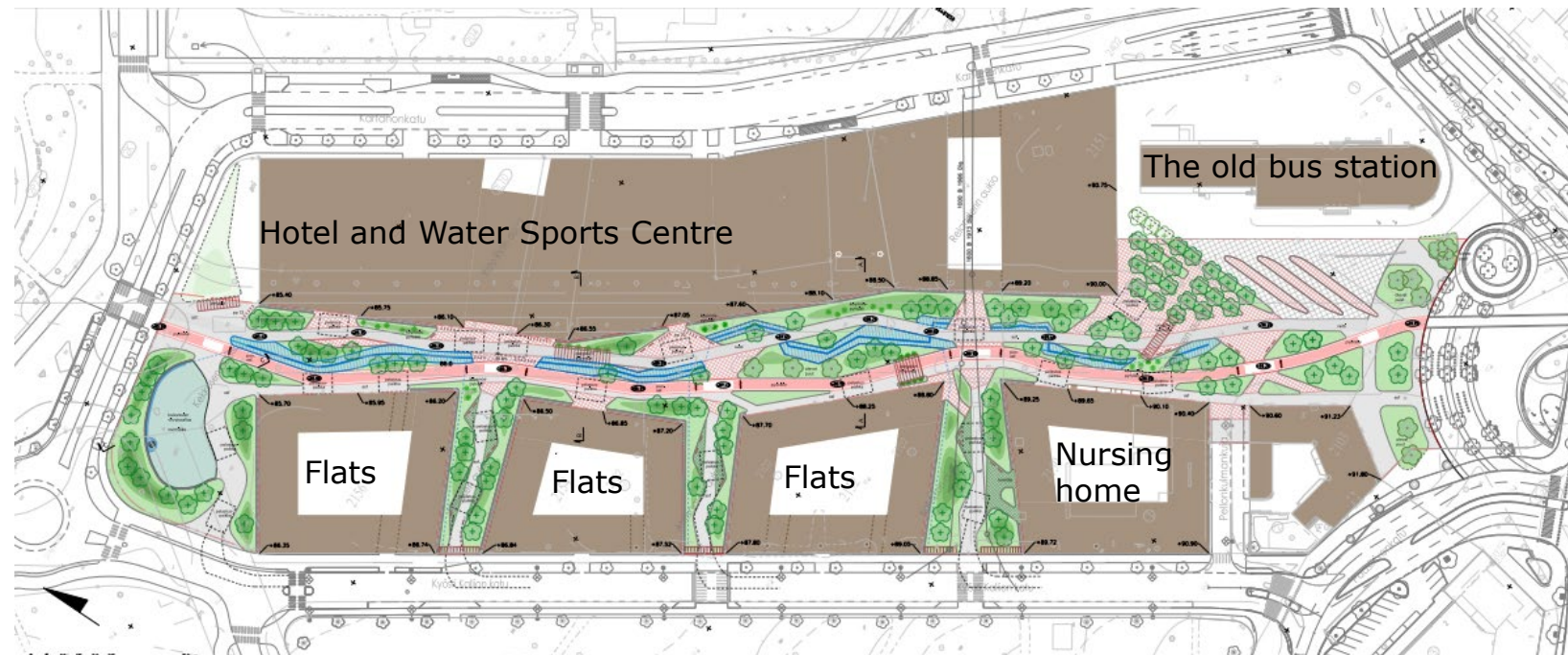
## Future plans

- Diverse housing for approximately 1,000 residents, totaling 50%.
- Next step in area is to build new pedestrian and cycling paths.
- Water Sports Center + hotel under planning.

Current view from the east



Hotel and water sport centre plan



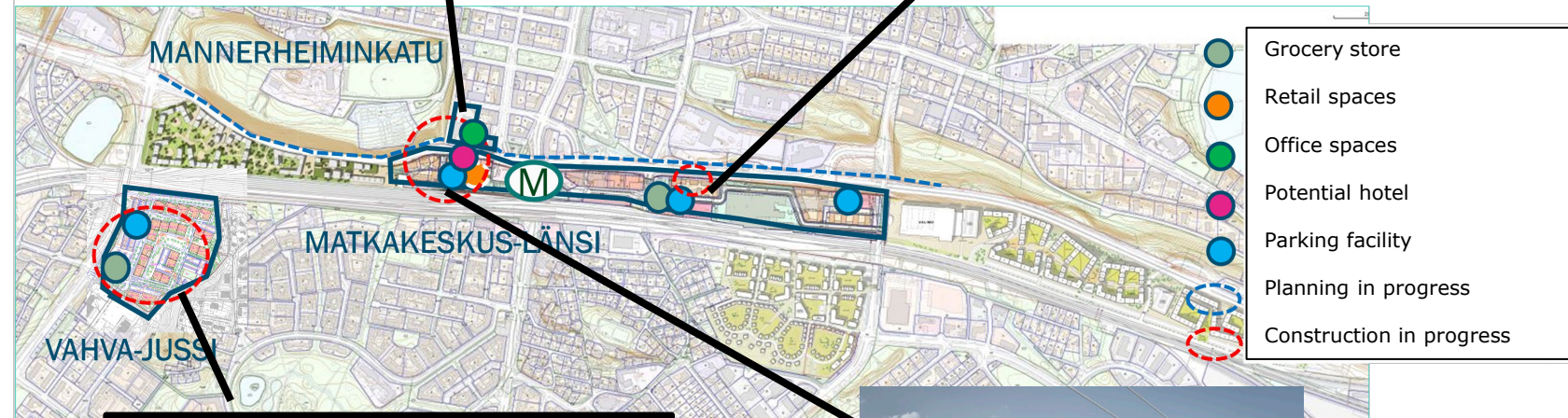
# Station Area

## Now

- The port of Lahti. In addition that the area connects Lahti to the rest of the country, it also connects northern and southern parts of the city.
- Office buildings along the track
- In the vicinity, there is a lot of residential housing.

## Future plans

- New area planned along the railway line.
- A new urban residential and office area is being developed on the former industrial and railway site for over 6,000 residents and more than 3,000 employees.



# Salppuri Area

## Now

- International events (Lahti Ski Games)
- In addition to permanent facilities, there are many opportunities in nature
- Exhibition centre with many fairs and events.

## Future plans

- Developing the sports center for broader event usage
- A new multi purpose arena is under planning but it won't fit in the current location (Isku Arena).



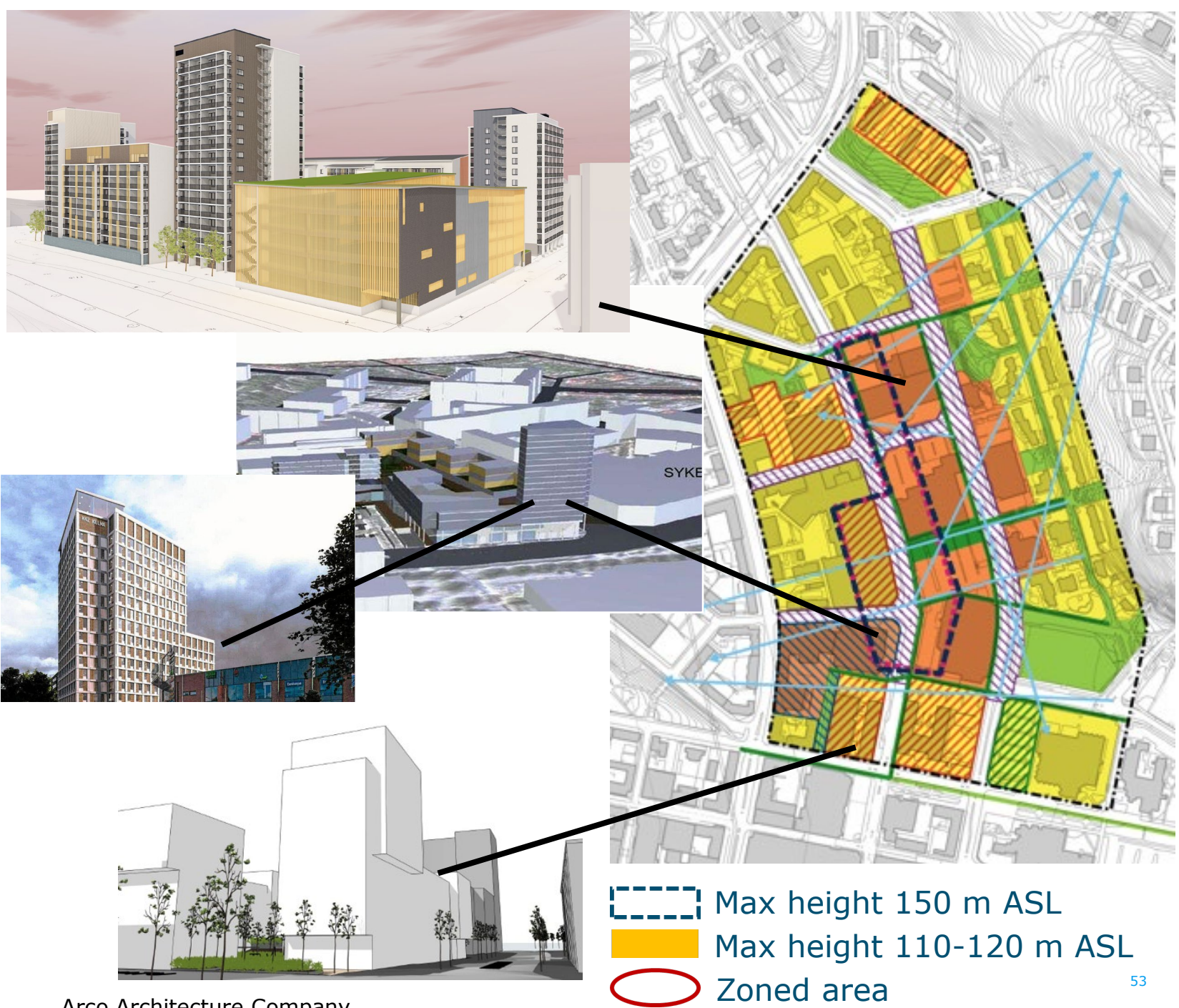
# Paavola

## Now

- Mixed residential and market area
- Library and theatre

## Future plans

- A gradually developing higher-rise residential area is being constructed (2022...2050)
- Focus maintains still on retail



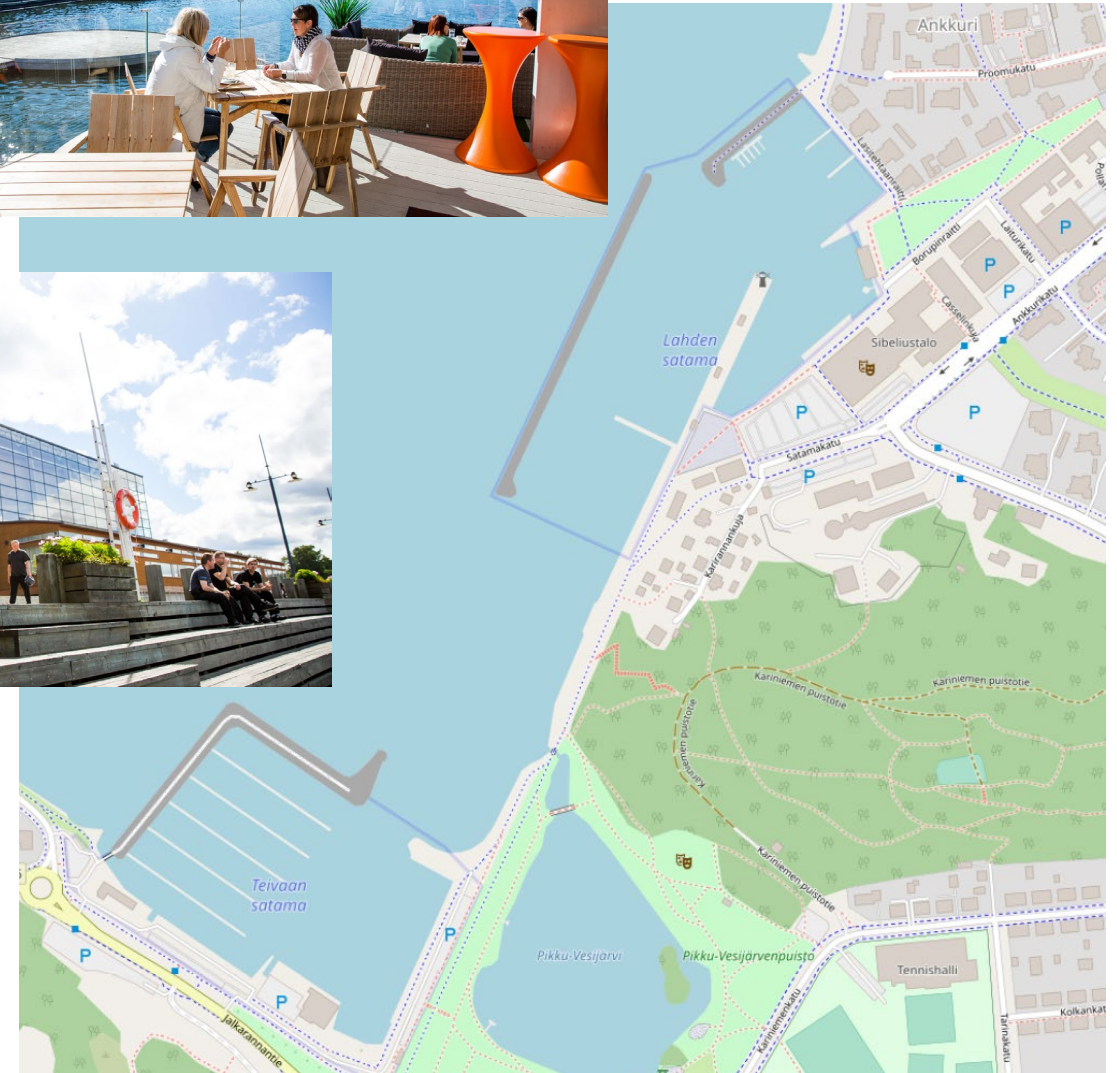
# Harbour area

## Now

- A popular leisure spot
- Lots of coffees, restaurants and bars.
- World class concert hall, Sibeliustalo
- A lot of residential areas around

## Future plans

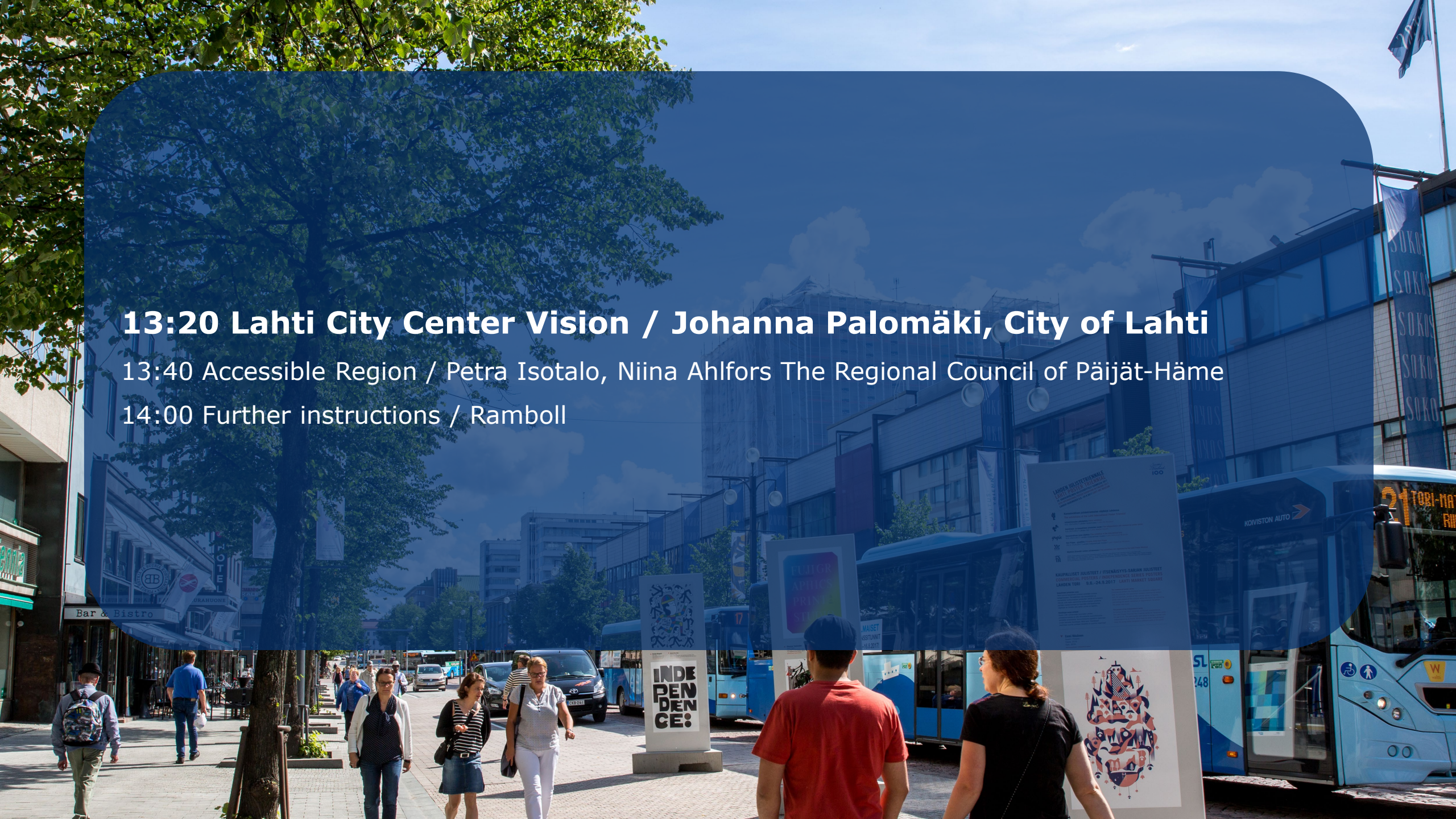
- How to better utilize the waterfront,
- How to develop services
- How to connect to the centrum



## 13:20 Lahti City Center Vision / Johanna Palomäki, City of Lahti

13:40 Accessible Region / Petra Isotalo, Niina Ahlfors The Regional Council of Päijät-Häme

14:00 Further instructions / Ramboll



Lahti

# *City Centre Vision 2040*

What will Lahti look, feel and sound like?

7.11.2023

Johanna Palomäki, city architect



# *Start with Why*

Why do we need a vision for the city centre 2040?

[www.lahti.fi/keskustavisio](http://www.lahti.fi/keskustavisio)

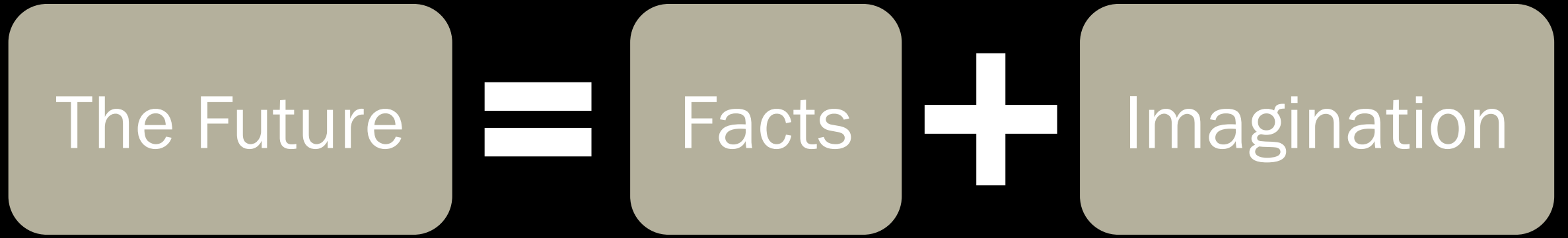








PAIJANTEENKATU 9•7



Futurist Elina Hiltunen







# How?

We're working with the whole community

10.10.2023

65

Students, residents and decision-makers brainstorming together

Open brainstorming session  
September 20, 2023  
About 70-80 participants,  
including children



7.11.2023



Stakeholder workshop  
September 28, 2023  
about 60 participants

# *What kind of ideas have come up?*

A group of people are seated at long white tables in a meeting room, facing towards the front. They appear to be listening or participating in a discussion. The room has a red floor and white walls. In the foreground, a woman with short grey hair and glasses is seen from the back, wearing a patterned top. Other people are seated around her, some looking towards the front. A man in a dark suit is seated next to her. In the background, more people are standing and talking. The overall atmosphere is professional and collaborative.



## What is Lahti Centre known for in the 2040's?

120+ respondents, including residents, decision makers and urban planners

# *Results of workshops*



# *Sustainable urban lifestyle*

A photograph of a park scene. In the foreground, a woman with blonde hair is sitting on the grass, looking towards the right. In the background, a large crowd of people is gathered around a fountain and a bridge. The fountain has several water jets spraying upwards. The bridge is a simple metal railing structure. The park is lush with green trees and grass.

Radically more  
green and blue

Commercial and  
non-commercial  
activities and  
spaces

Students in the  
Centre

# *Authentic urban experience*



art,  
design,  
culture,  
aesthetics,  
events

Lahti – the city  
of landmarks

The market  
square – the  
urban core



# *Compact 15-minute city*

A person wearing a black helmet and a black t-shirt with a backpack is riding a bright yellow bicycle on a paved path. The path is lined with trees and a green bench is visible in the background. The scene is outdoors and appears to be a university campus.

Functional and  
safe everyday  
life

Easy mobility

Accessibility of  
the University  
Campus

# *Thank you!*

Johanna Palomäki

City architect

[johanna.palomaki@lahti.fi](mailto:johanna.palomaki@lahti.fi)

# 13:40 Accessible Region / Petra Isotalo, Niina Ahlfors The Regional Council of Päijät-Häme

14:00 Further instructions / Ramboll



# Accessible region

Niina Ahlfors, Petra Isotalo

7.11.2023



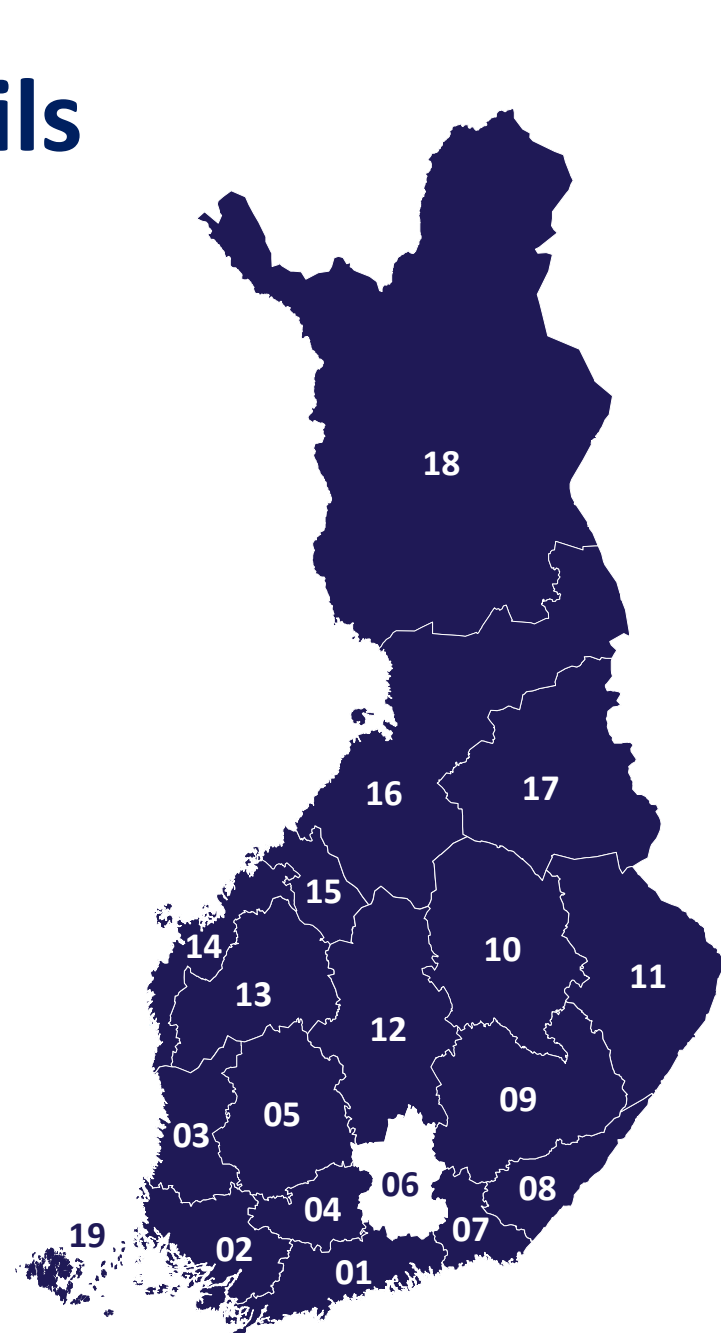
**Päijät-Hämeen liitto**  
The Regional Council of Päijät-Häme

# Regional Councils of Finland

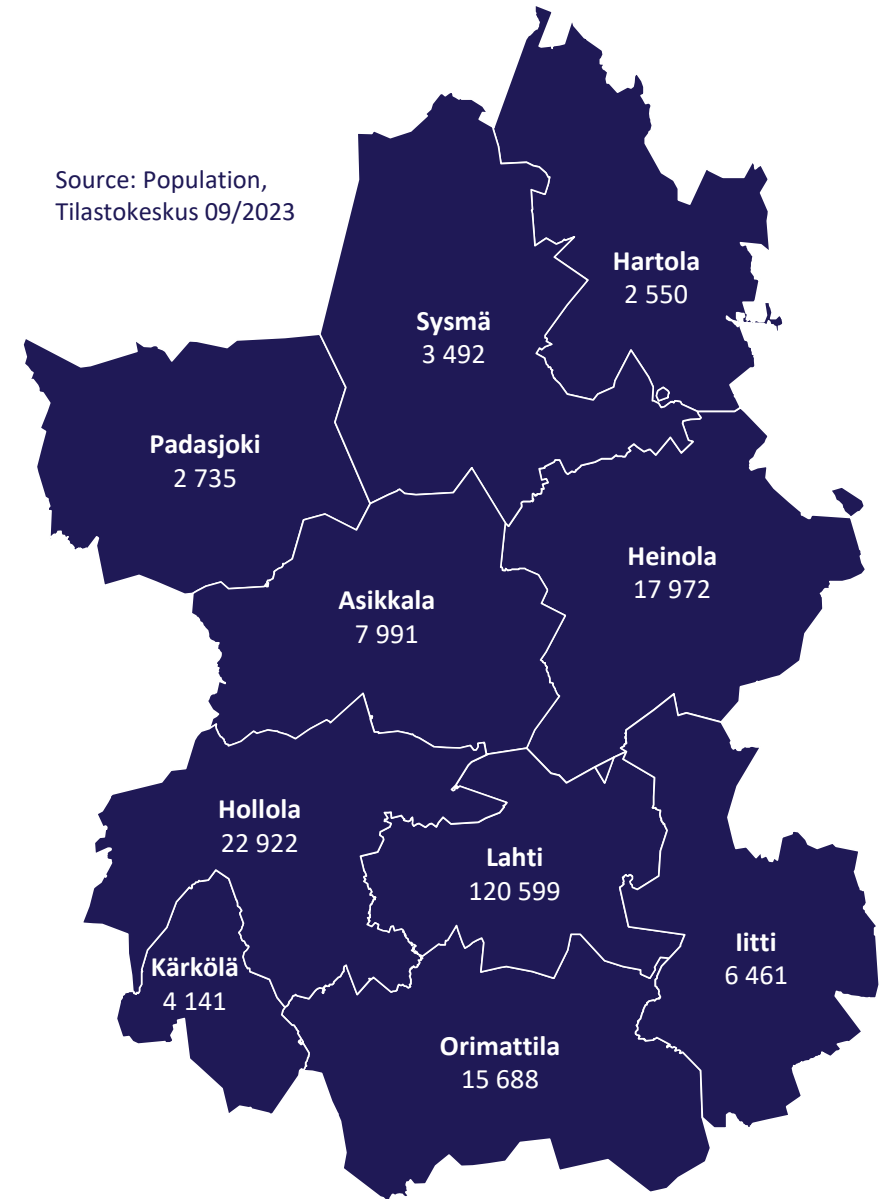
- 01 Regional Council of Uusimaa
- 02 Regional Council of Southwest Finland
- 03 Regional Council of Satakunta
- 04 Regional Council of Häme
- 05 Regional Council of Tampere Region
- 06 Regional Council of Päijät-Häme**
- 07 Regional Council of Kymenlaakso
- 08 Regional Council of South Karelia
- 09 Regional Council of South Savo
- 10 Regional Council of Savo
- 11 Regional Council of North Karelia
- 12 Regional Council of Central Finland
- 13 Regional Council of South Ostrobothnia
- 14 Regional Council of Ostrobothnia
- 15 Regional Council of Central Ostrobothnia
- 16 Regional Council of North Ostrobothnia
- 17 Regional Council of Kainuu
- 18 Regional Council of Lapland

## The autonomous Åland Islands

- 19 Government of Åland



Source: Population,  
Tilastokeskus 09/2023



**Päijät-Hämeen liitto**  
The Regional Council of Päijät-Häme

# What do we do in Regional Council?



Finance regional development projects with national and EU funding.



Regional land use plan  
Transport system plan



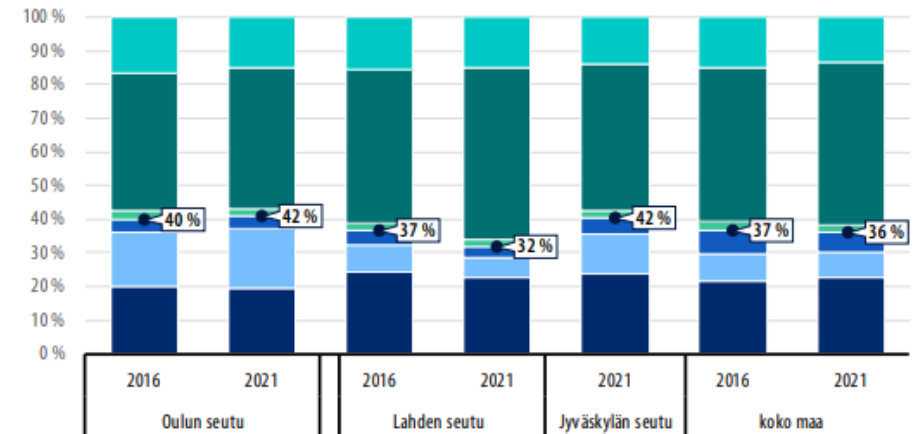
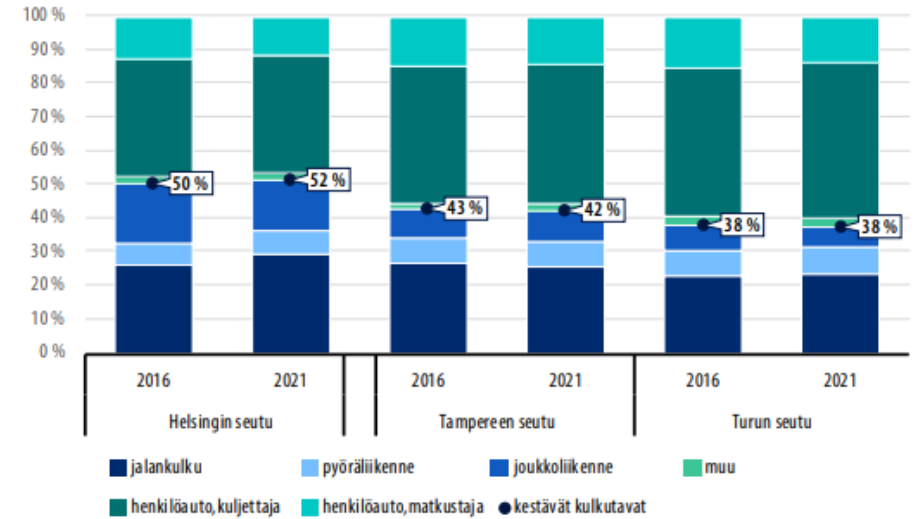
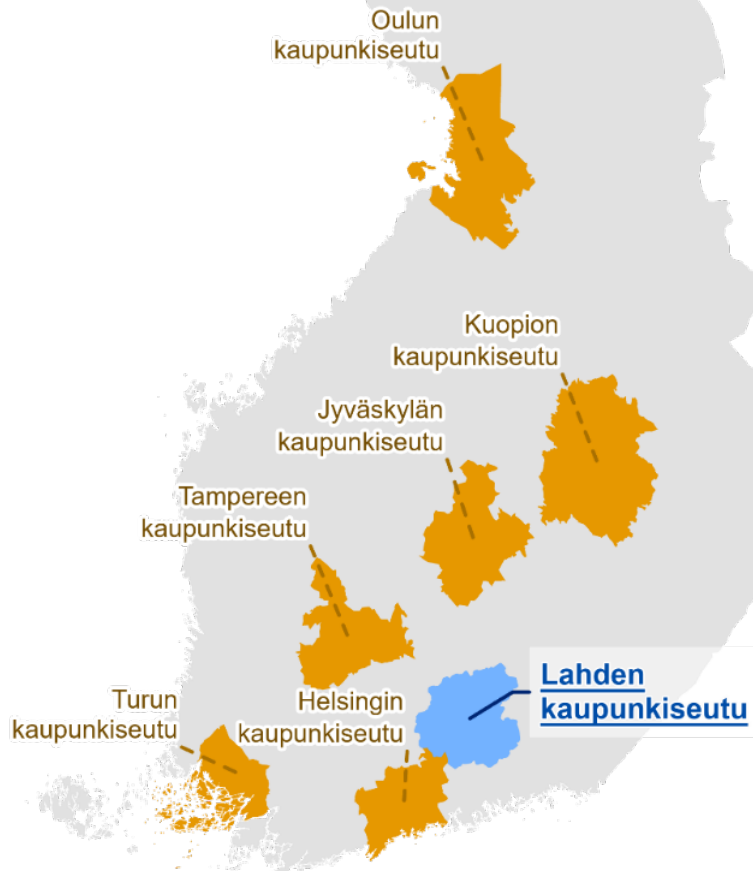
**Päijät-Hämeen liitto**  
The Regional Council of Päijät-Häme

# Mobility now



**Päijät-Hämeen liitto**  
The Regional Council of Päijät-Häme

# Competition between the biggest cities in good spirit



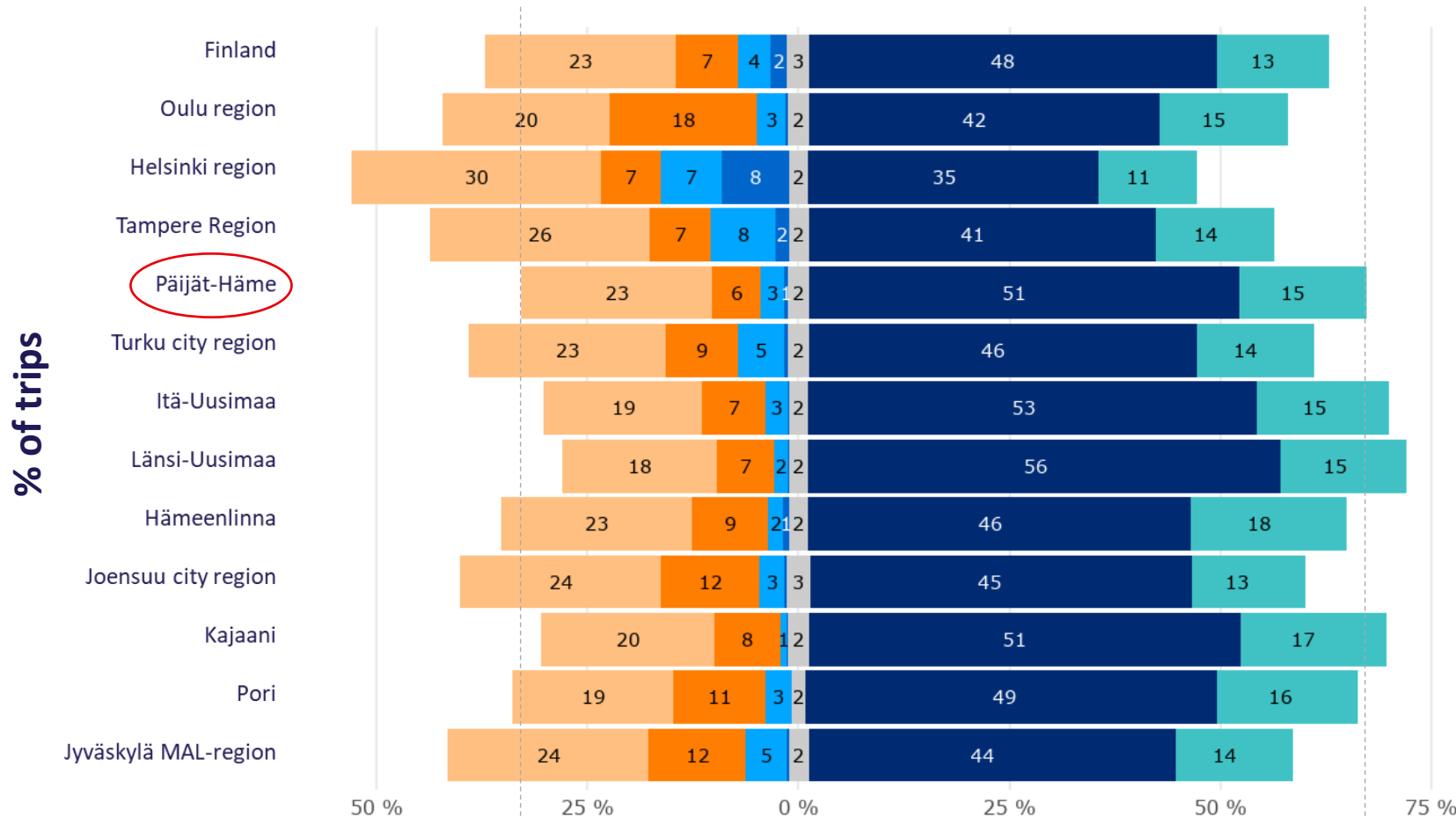
Distribution of modes of transportation and share of sustainable modes of travel





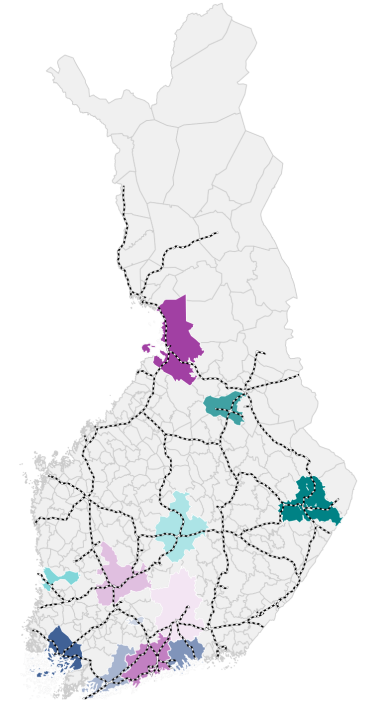
# National Travel Survey 2021

## Modal share by region (% of trips)



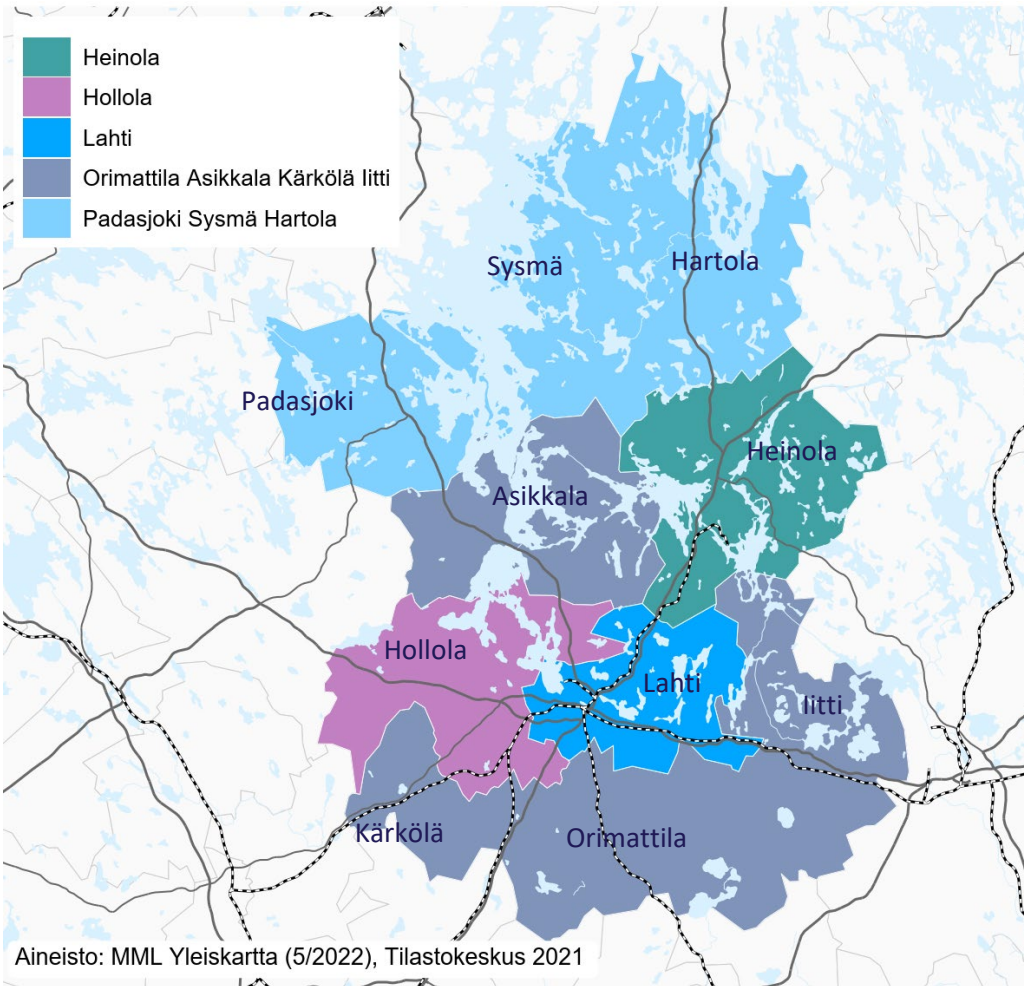
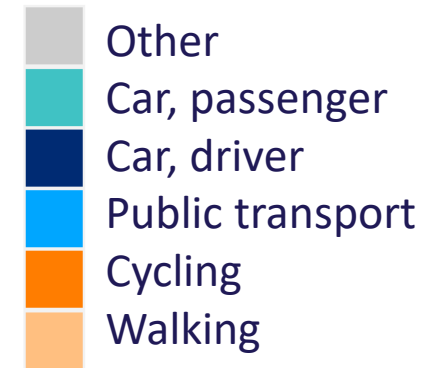
Regions with additional sample

- Helsingin seutu
- Hämeenlinna
- Itä-Uusimaa
- Joensuun kaupunkiseutu
- Jyväskylän MAL-seutu
- Kajaani
- Länsi-Uusimaa
- Oulun seutu
- Pori
- Päijät-Häme
- Tampereen seutu
- Turun kaupunkiseutu

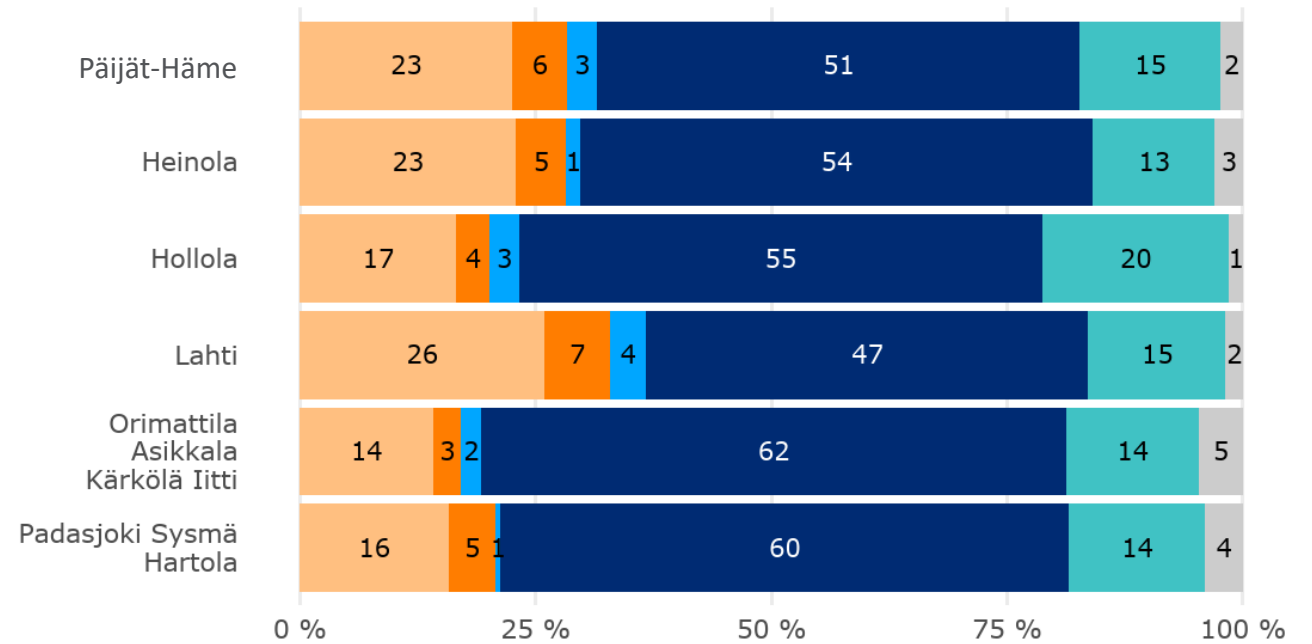


- Other
- Car, passenger
- Car, driver
- Public transport (bus/train)
- Cycling
- Walking

# National Travel Survey 2021

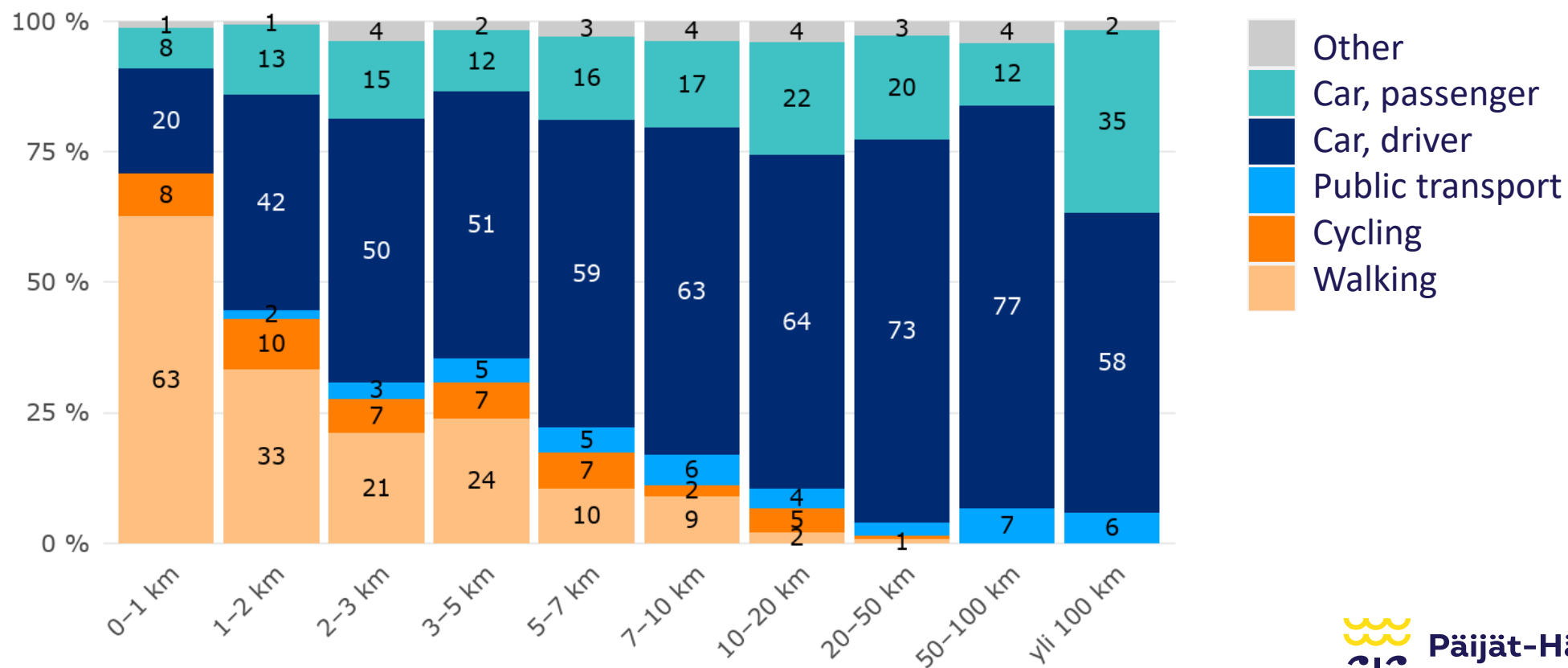


Modal share by the place of residence (% of trips)



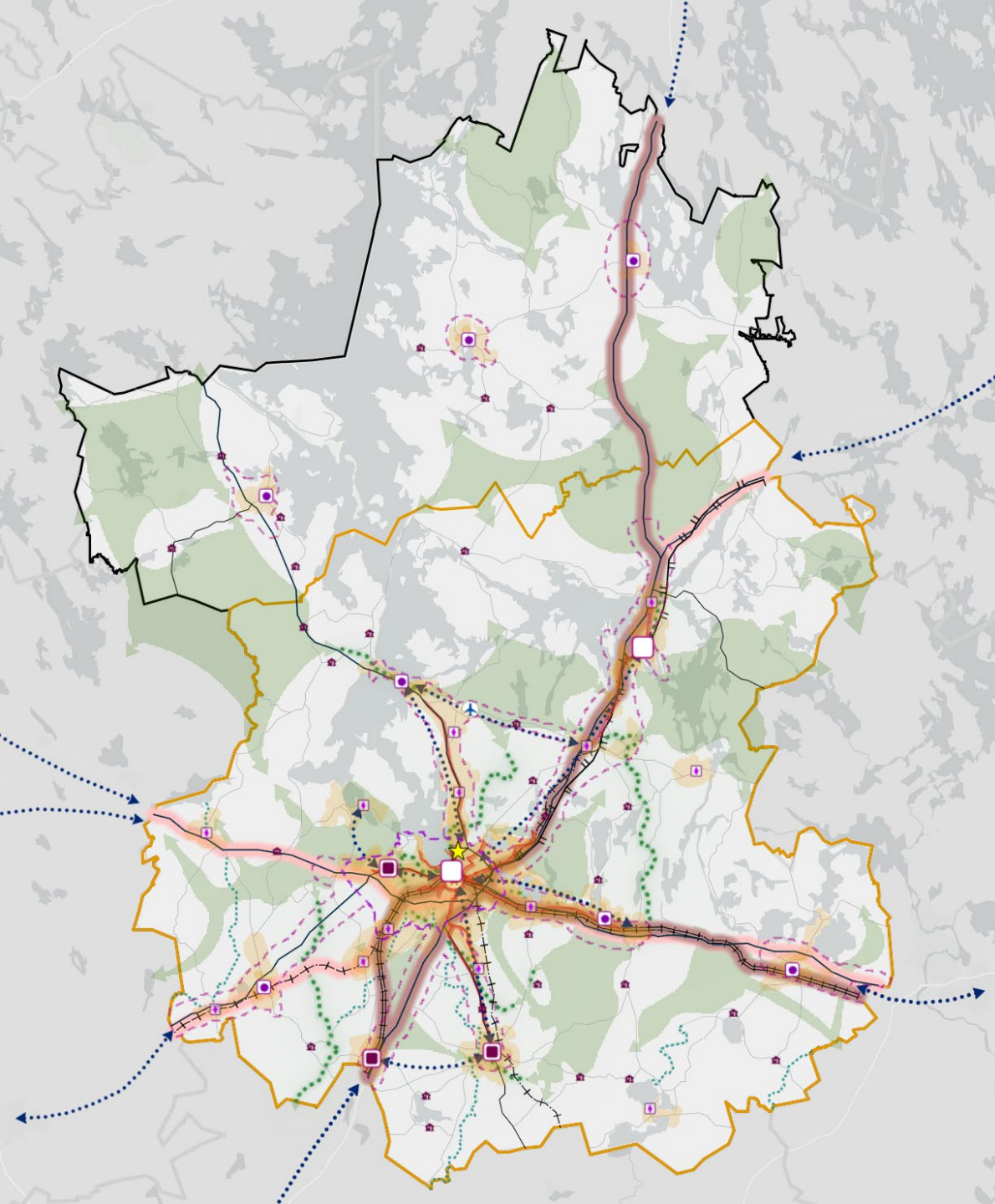
# National Travel Survey 2021

Modal share by the length of the trip, Päijät-Häme  
(% of trips of certain length)



**How do we promote  
accessibility and  
sustainable mobility?**



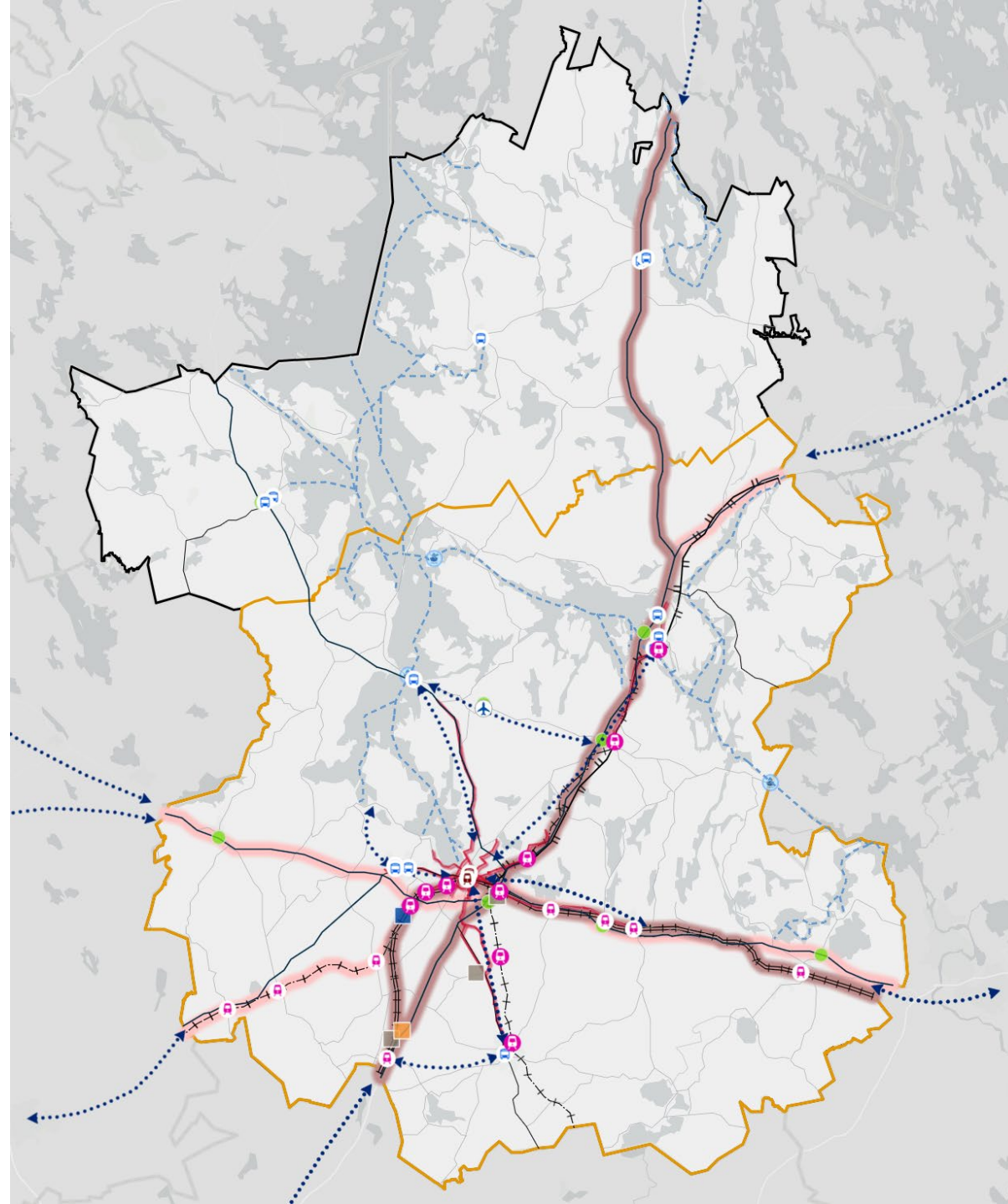


# Regional Urban Plan

- urban structure
- transport system
- green structure
- <https://urly.fi/3eHr>



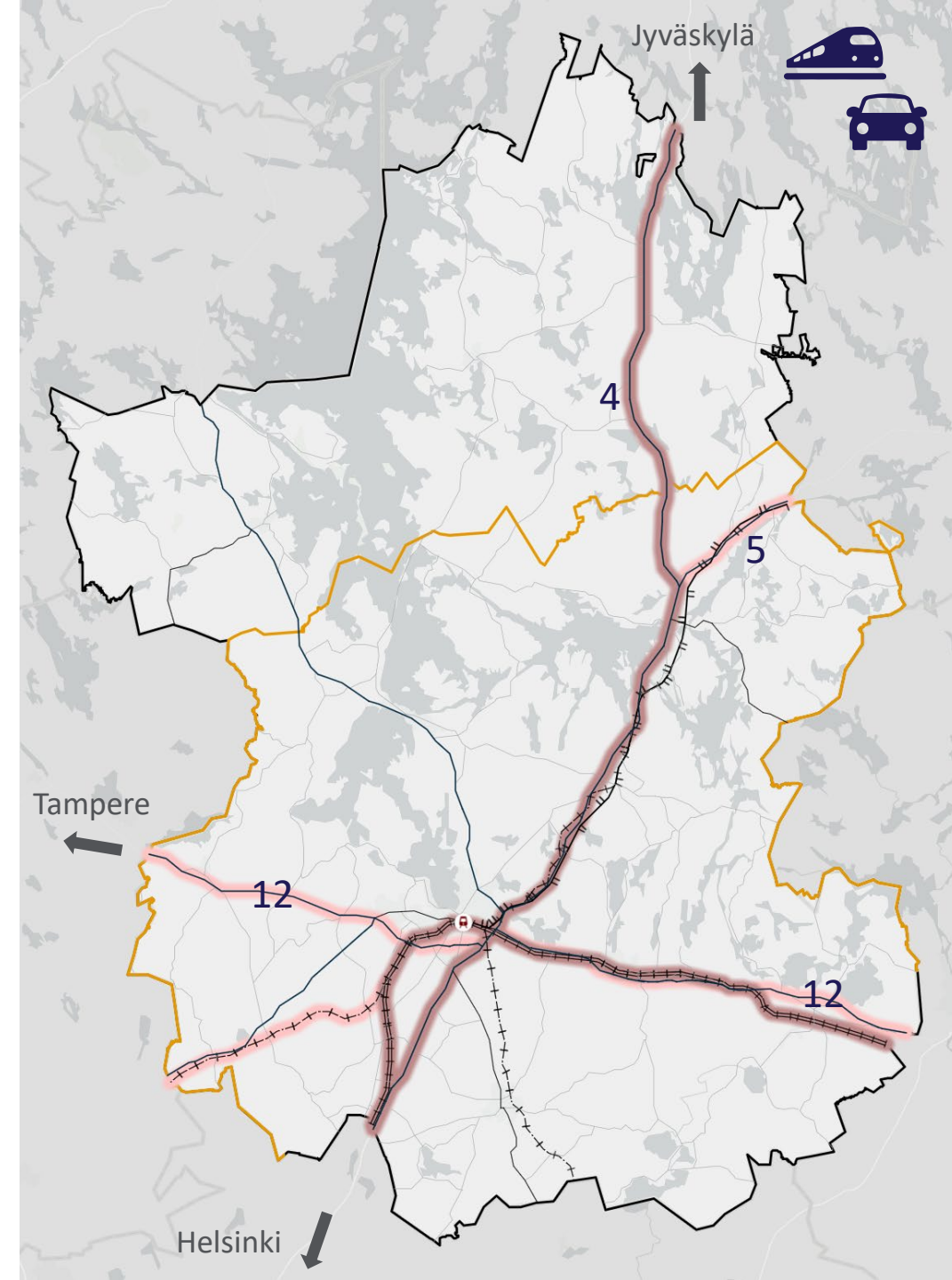
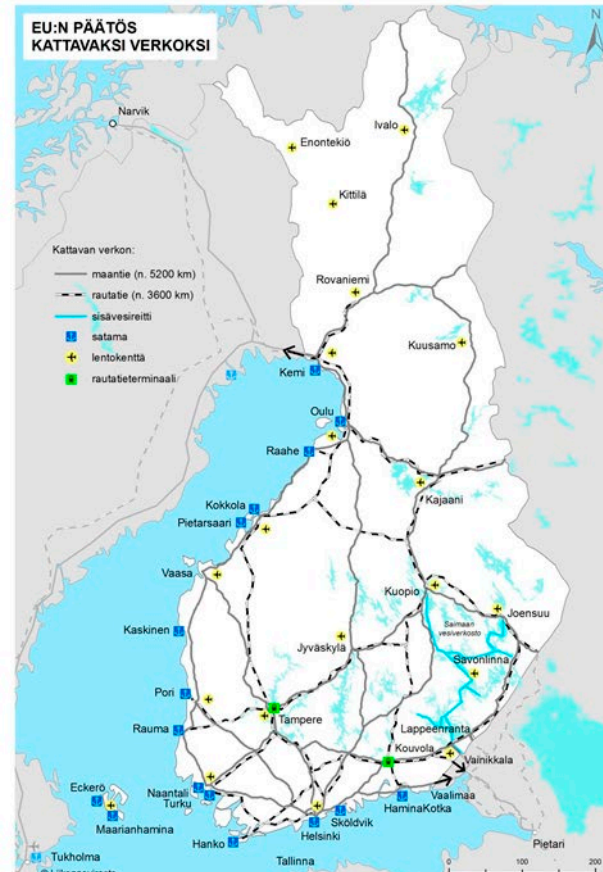
# Transport vision for 2060



**Päijät-Hämeen liitto**  
The Regional Council of Päijät-Häme

Lahti and Päijät-Häme are located along excellent road and rail transportation connections to other parts of Finland and Europe.

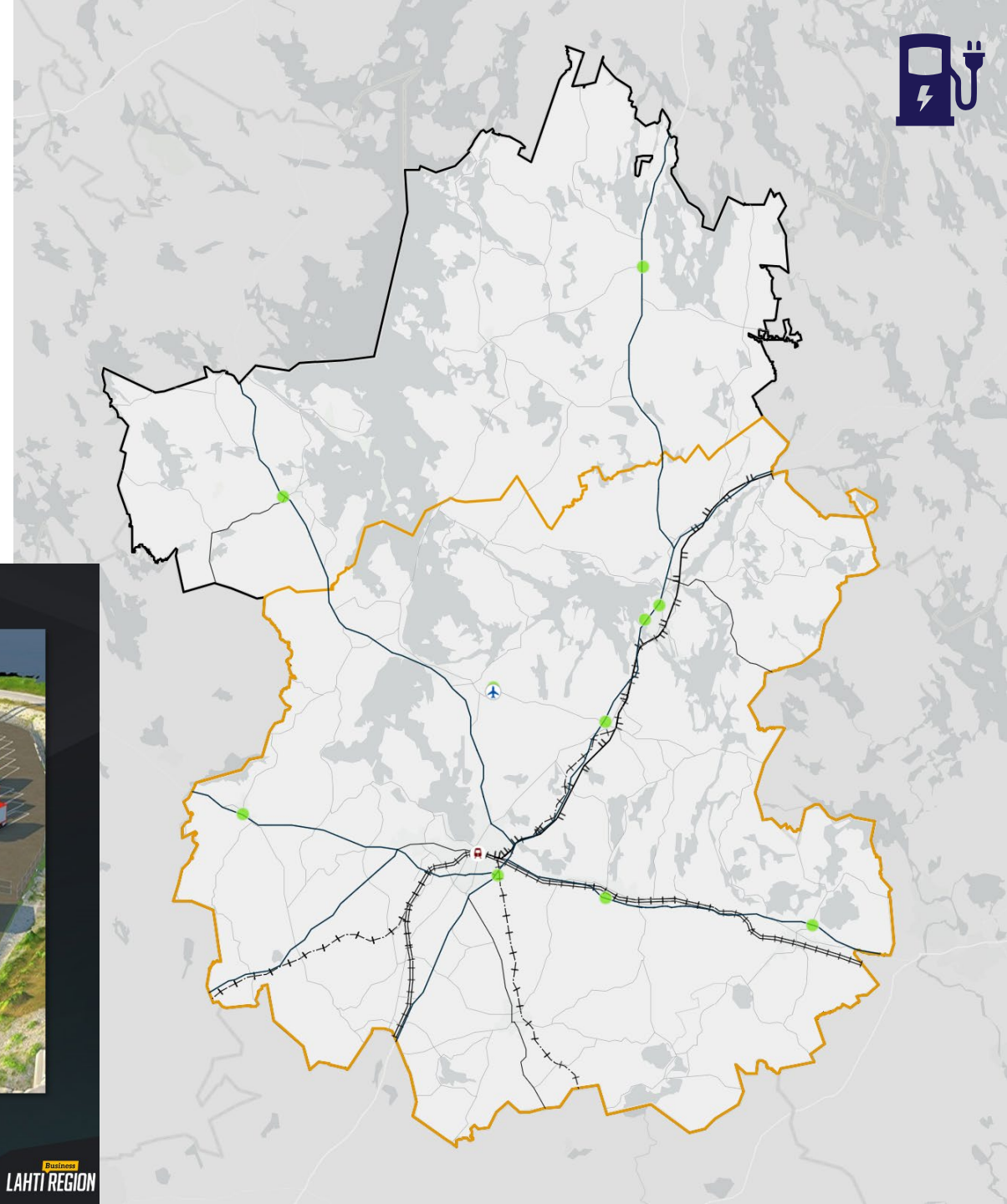
Highways 4, 5 and 12 as well as the passenger rail network are part of the European wide transport network (TEN-T).



# Potential locations for alternative fuel distribution

(could be clean electricity, biogases, hydrogen or synthetic methane)

Source study



Esimerkki julkisen latauskentän rakentamisesta maailmalta: Göteborg, Circle K



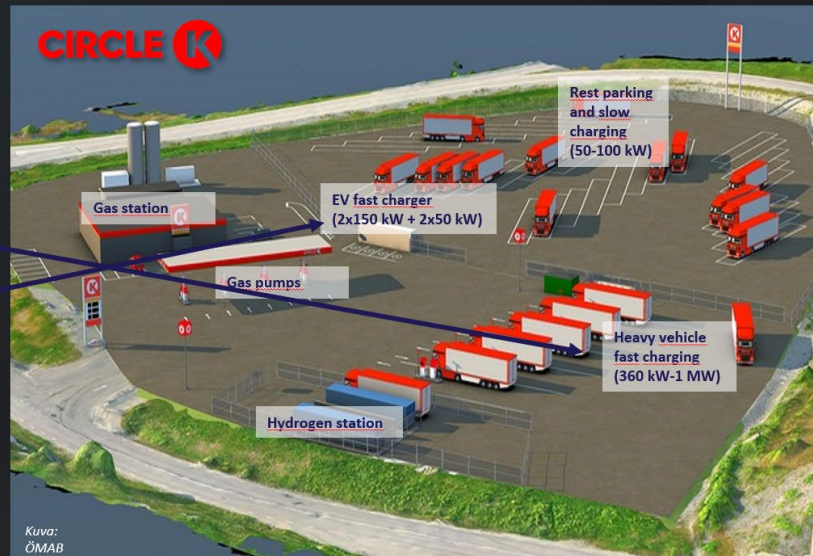
Kuva: Elbil



Kuva: Google Maps



Kuva: Tomas Törnblom

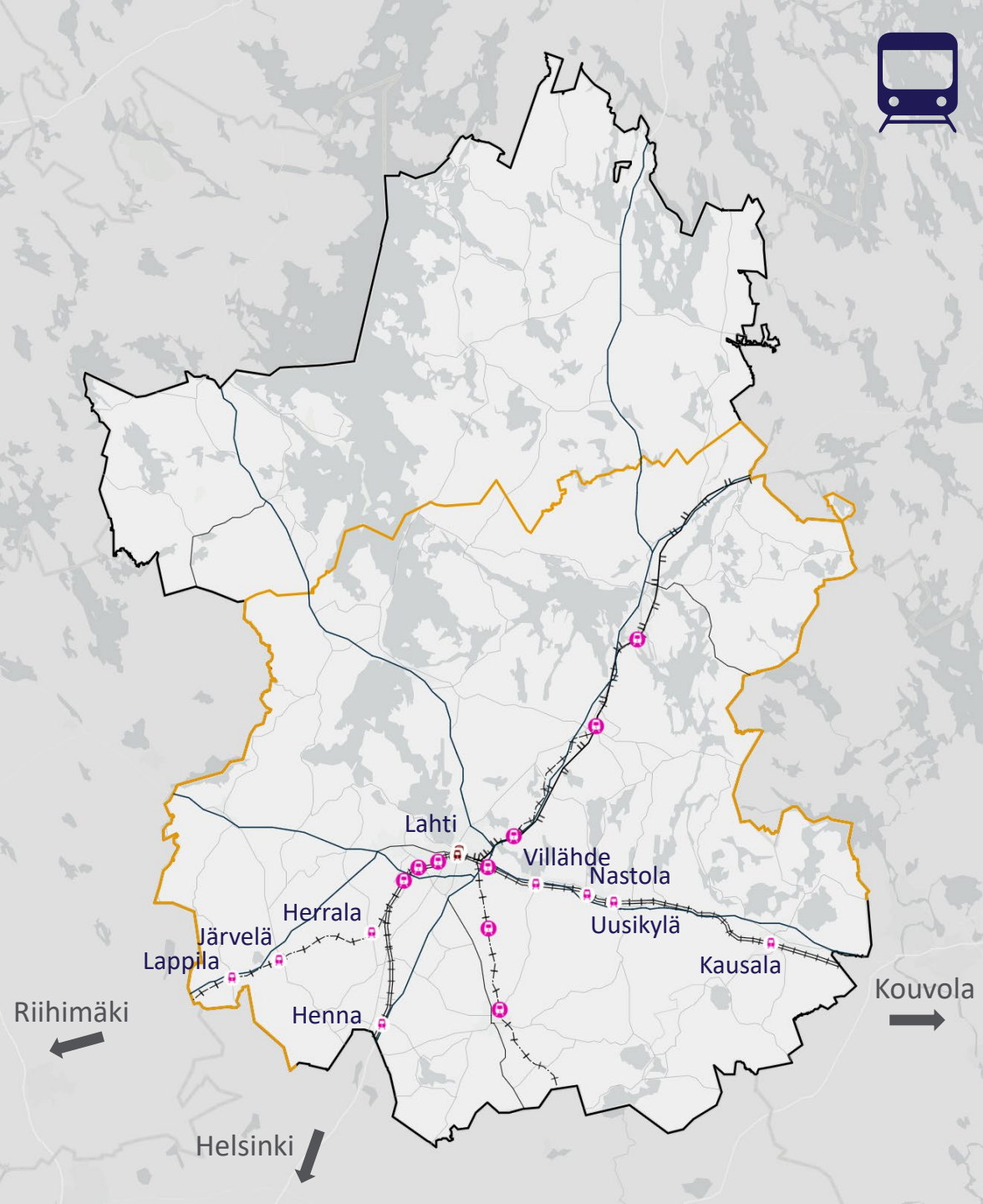


Kuva: ÖMAB



**9 passenger train stations,**  
long-distance trains stop at Lahti railway station

**Long-distance trains:** Helsinki-Lahti-Kouvola  
**Commuter trains:** Lahti-Helsinki, Lahti-Kouvola,  
Lahti-Riihimäki



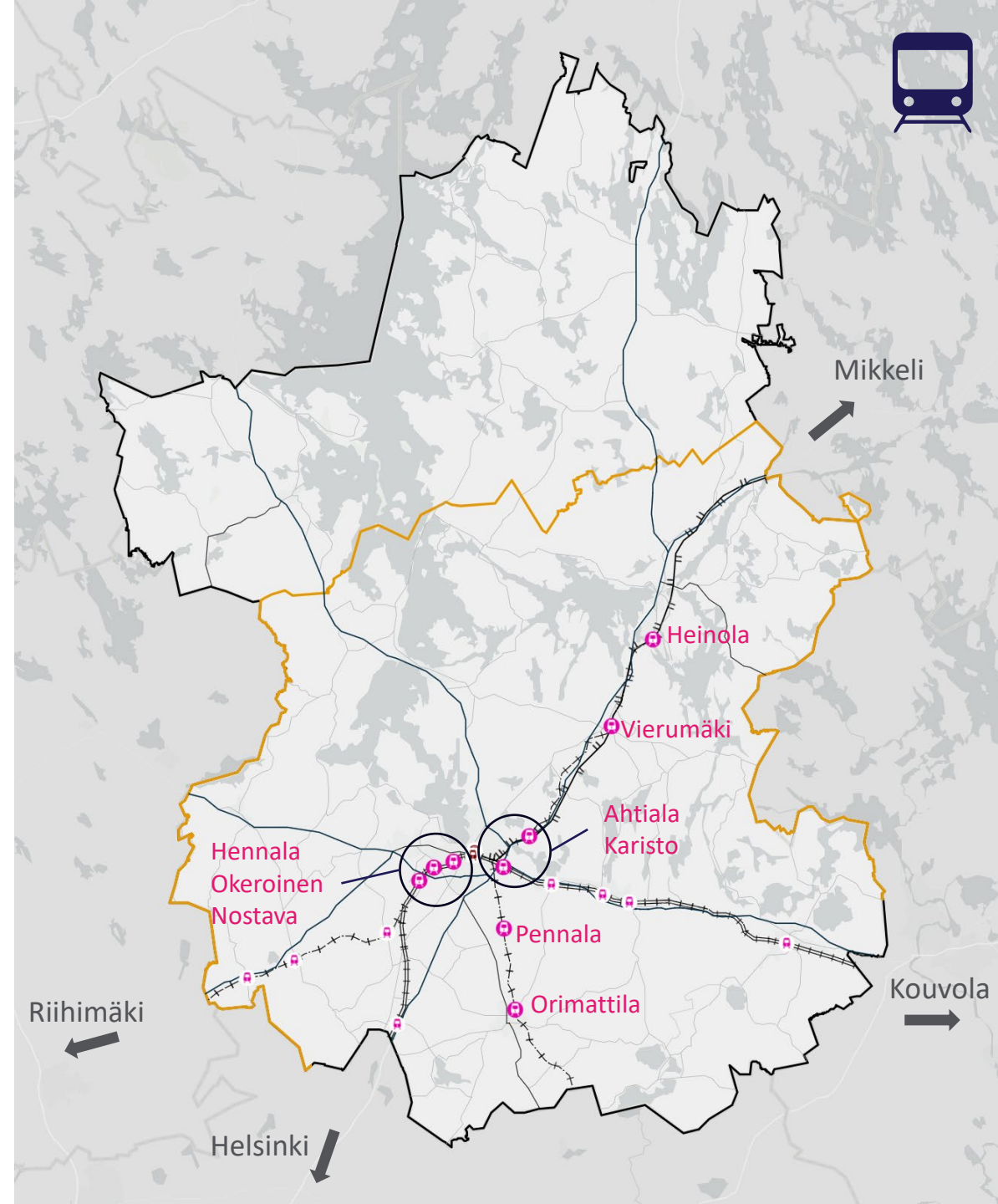
## In the future

Commuter trains to Heinola 2040 and to Orimattila 2060

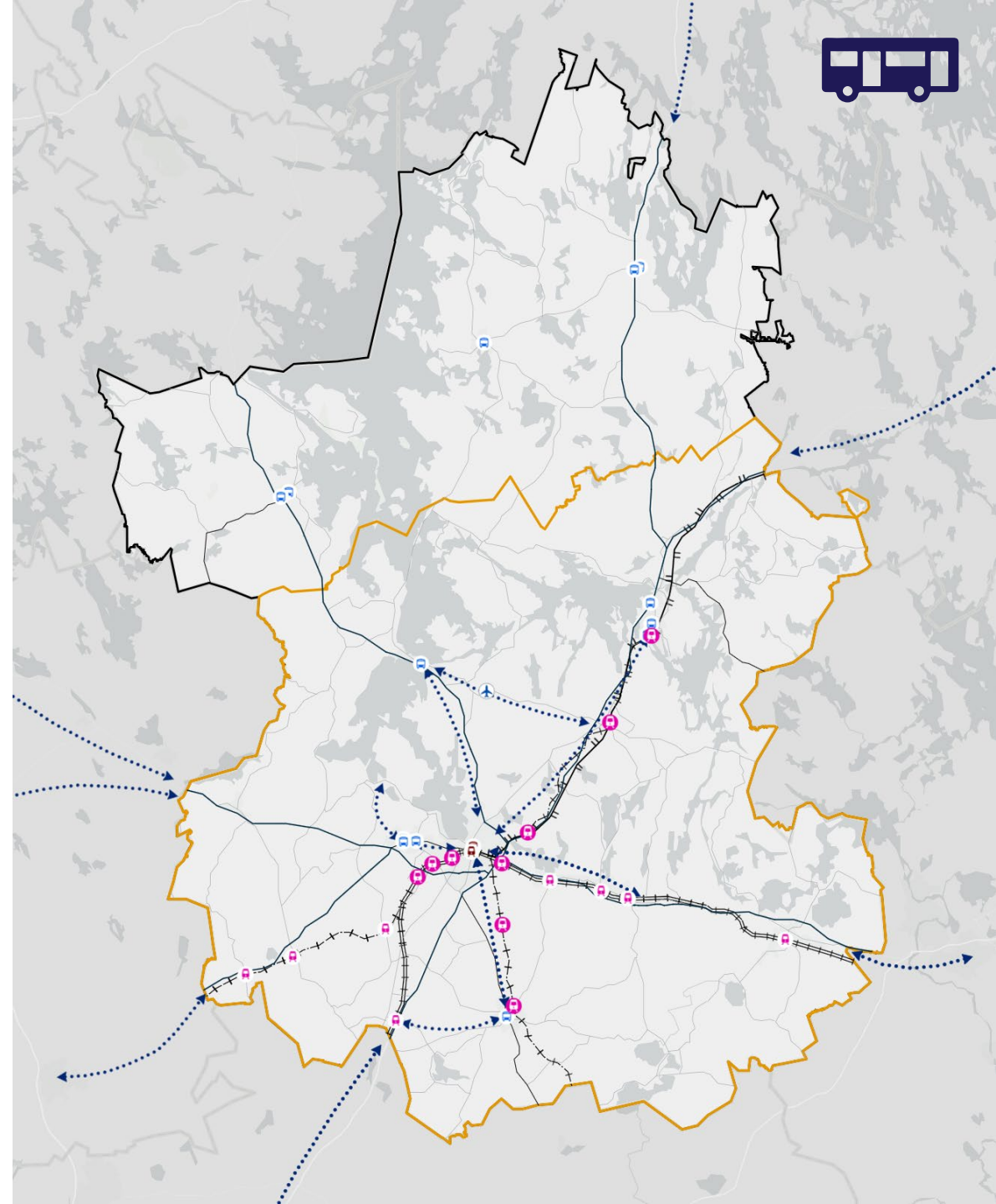
Lahti-Heinola-Mikkeli (Savon oikorata) 2060

Connection to tram/light rail network?

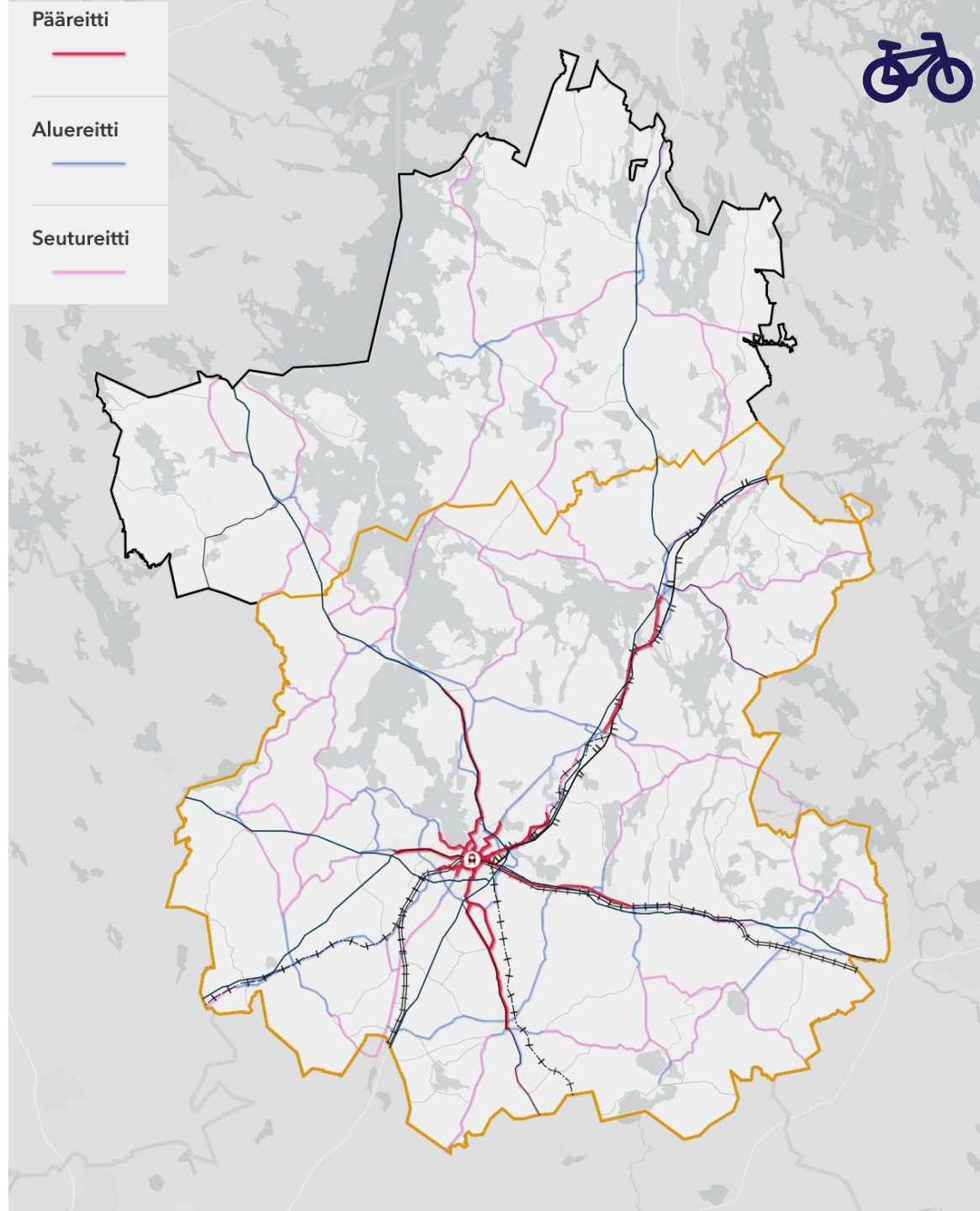
Duoraitoliikenteen mahdollisuudet – Heinolan, Lahden ja Orimattilan duoraitiotieselvitys 2019 (Report in Finnish)



# Important public transportation (bus) connections and stops

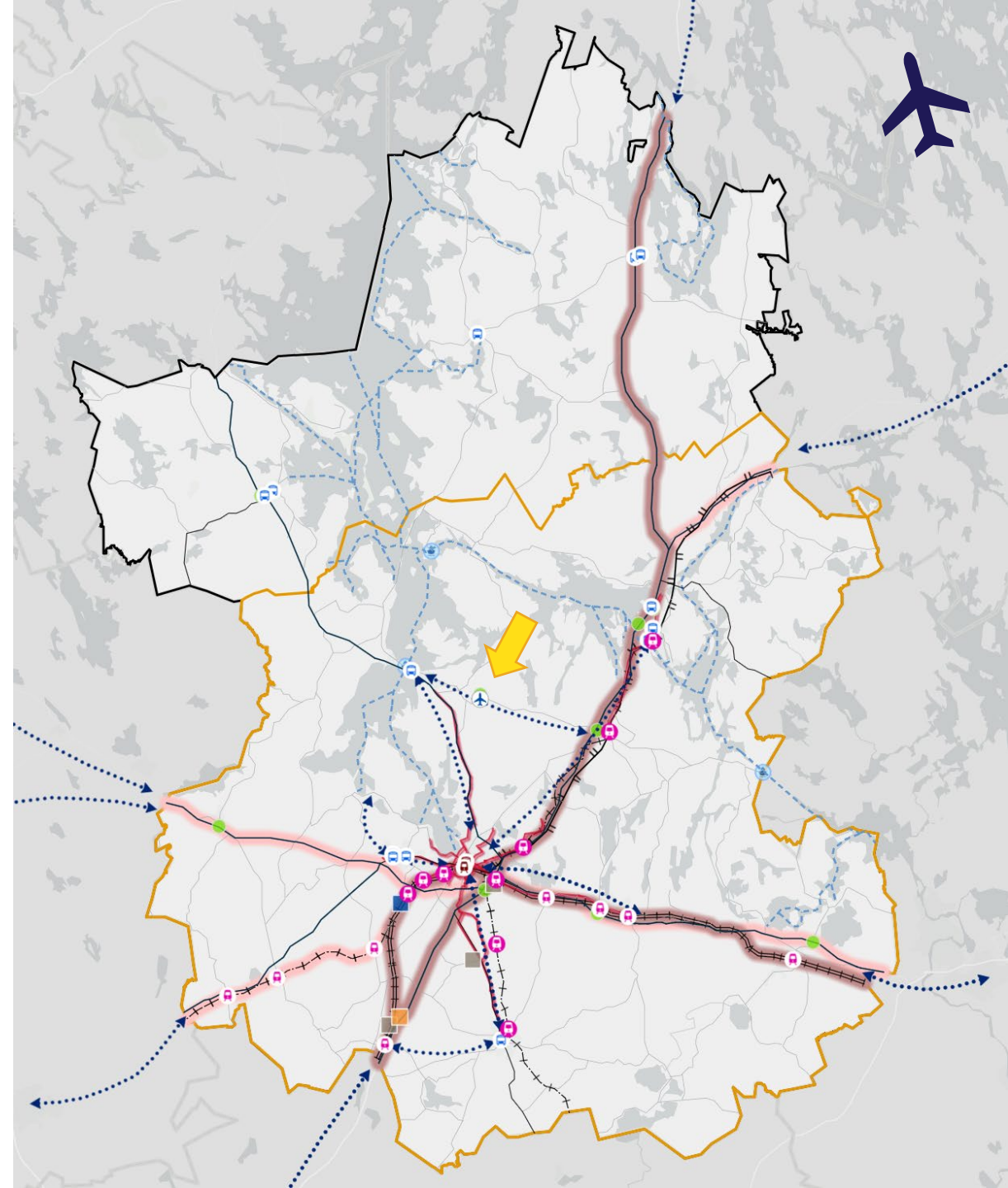


Major cycling routes of Päijät-Häme connect cities, municipalities and village accross the region.



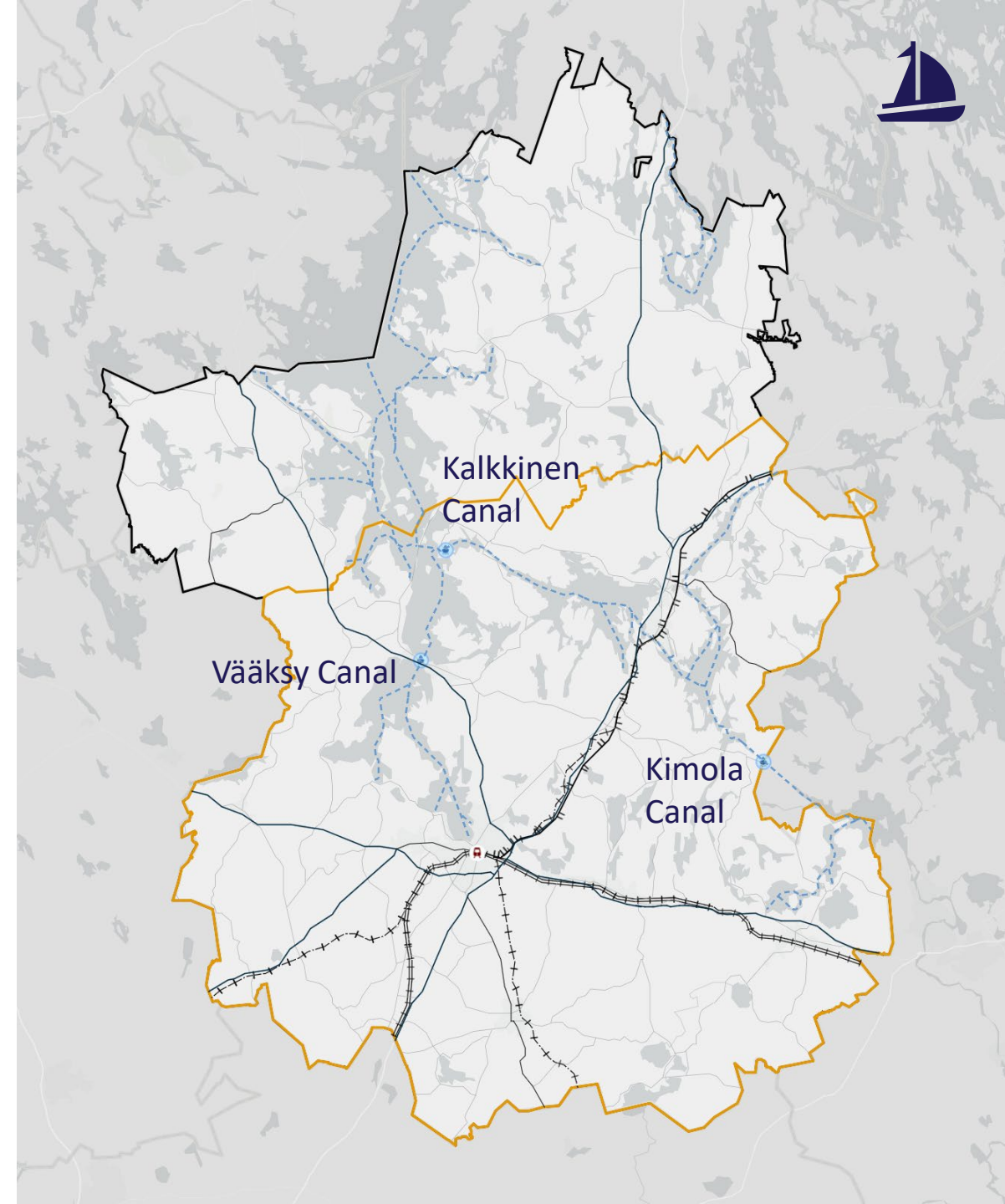
Lahti-Vesivehmaa regional airport is located in Asikkala and it is the only airport in Päijät-Häme.

The airport is used for general aviation and flight training.



From a recreational perspective, water transport is very important in Päijät-Häme.

Three canals connecting Lakes Vesijärvi, Päijänne, Ruotsalainen, Konnivesi and Pyhäjärvi enable navigation from Lahti all the way to Kouvola region.





## PÄIJÄT-HÄMEEN LIIKENNEJÄRJESTELMÄSUUNNITELMA



## Päijät-Häme Regional Transport System Plan 2019



**Päijät-Hämeen liitto**  
The Regional Council of Päijät-Häme

**Keep in mind  
the regional  
level**



**Päijät-Hämeen liitto**  
The Regional Council of Päijät-Häme





**Good luck!**

**Thank you!**



**Päijät-Hämeen liitto**  
The Regional Council of Päijät-Häme

# 14:00 Further instructions / Ramboll



# Rules of competition

The rules can be read on the Traffic Challenge website:

<https://c.ramboll.com/fi/72h-liikennehaaste-2023>

Main points:

- **Obligation to participate in** compulsory occasions (min 2 persons from each team)
- exceptions possible only by agreeing with the Ramboll organising committee
- **Compliance with deadlines**
- final deliverables (PPT) to be delivered by a memory stick on Friday 10.11. by 08.00

## Competition rules

### Competition organiser

- The competition organisers (later Organiser) are the City of Lahti, the Finnish Transport Infrastructure Agency, The Regional Council of Päijät-Häme, Uponor, Telia, Pelicans, LUT University, LAB University of Applied Sciences, and Ramboll Finland Oy.

### Competition participants

- Students of all subjects in the previously mentioned schools, regardless of their year, may participate in the competition.
- In order to participate in the competition, registration must be done in advance as stated by the Organiser (Website).
- The main languages of the competition are Finnish and English.
- The teams will be assigned by the Organiser.
- If the number of participants is too great in relation to the size of the teams and the maximum number of participants, the Organiser reserves the right to limit the number of participants. The criteria for limiting participants are based on attempting to create teams with students from a wide range of disciplines.
- The teams will select a Project Manager from amongst themselves, who will serve as the contact person between the team and the Organiser.

### Competition schedule

- The competition will be held in Lahti on 7-10 November 2023 in accordance with the programme and schedule provided by the Organiser.
- During the competition, the teams are expected to participate in all of the events that the Organiser has communicated in advance. All team members are not required to be present. Instead, it is sufficient to have one member attend. The events and their detailed schedule will be posted on the competition website when the competition starts.

### Competition entries

- The teams can work on their competition entries where they like (e.g., educational institution facilities, team member homes, and public places such as libraries and cafés). The Organiser will reserve rooms for the teams in their facilities.
- During the competition, teams can use different information sources, such as interviews, Internet materials and literature. Used sources must be stated in the competition entry in accordance with the instructions provided at the start of the competition and good reporting practices.
- The competition entries are to be reported and submitted in electronic format. The implementation method can be freely determined by the team and programs used for reporting include PowerPoint, Word and Excel, for example. Video reporting is also possible. The entry should also include a PowerPoint presentation. In addition, the submission should include a 1-2-page practical report in Word format. The final material must be in Finnish or English.
- The practical report (1-2 pages) of the competition entry is to be delivered by noon on Friday 10 November 2023. The Organiser has the option to not evaluate late entries.

### Panel of judges and evaluation

- The winning entry is chosen by a panel of judges consisting of representatives of the organisers. A representative from the City of Lahti will serve as the Chairman for the panel of judges.
- Each judge will award points to the competition entries according to pre-determined criteria.
- The winning entry is the one that receives the most points from the

# Project managers, team names and communication

- Each team selects a project manager from among them, as well as a name for the group, and tells the selected Case area they choose
- Project Manager delivers a **day report** (video, ppt or word file) on the team's work and greetings daily (Tuesday-Thursday) by 20:00. Submit all reports to Vili Ampuja & Inna Ampuja (forname.lastname@ramboll.fi)
  - The reports will be submitted to the jury and taken into account in the evaluation
- The project manager ensures that at least one of the group members belongs to the WhatsApp group for adhoc communication
- The project manager ensures that **at least one member** of the group is present at sparring and at the lectures
- The project manager ensures that the entry (Ppt) is **returned on time**



# Selection of neighbourhoods



# Working spaces & food

- Each team has a workspace in Campus
- There is also a dinner booked every night at 6
- When you go to your own space for the first time please put a sign on the door with your team's name and number

2. KRS



## Working spaces

**TEAM1** A235

**TEAM2** D241

**TEAM3** B242

**TEAM4** D239

**TEAM5** C214

**TEAM6** D240

**TEAM7** A236

**TEAM8** D242



Väylävirasto  
Trafikledsverket



# Reporting and submission of entries

- Entries should be reported and returned in **electronic form**
- Entry should include a **PowerPoint presentation**
- The final materials should be prepared in Finnish or English
- Returning of **the final presentation (Ppt)** in memory stick at the Sibelius hall, Fri Nov 10 by 08:00
- **Late submissions will not be considered**



# Background material

- During the competition, teams can use different information sources, such as interviews, Internet materials and literature
- Used sources must be stated in the competition entry with good reporting practice
- Each team will be given a memory stick at the beginning of the competition, which includes background material and information about the competition
- The memory stick will be returned to the organizer at the end of the challenge



# Sparring sessions and clinics

- At the clinics, the City of Lahti will sharpen the competition's goal, and Uponor and Telia will introduce products beneficial for the challenge.
- In sparring sessions, teams present their thoughts and can interview experts in the field, as well as receive feedback in support of drafting and brainstorming competition work.
  - **You can prepare for interviews** by thinking about questions for experts — experts don't have a presentation for teams!
- Each group has time for a 30 minutes with the sparring group
- At least one member of the group should participate in sparring, but we recommend sparring for everyone!
- Time: Wednesday 8.11.2023 between 11:30-13:00, each team will be informed more specific times and place after this event



# Practice presentations and closing seminar presentations

- 15 minutes/group is allocated for the performance of the entry - **stick to the given time limit**, it is not possible to stretch the performance time!
- Work should be presented in Finnish or English
- The whole group must be present both at the practise presentation and at the closing seminar\*
- Order of presentations are drawn
- **The practise presentations** will be held between 13.00 – 16.00 on Thursday, one group at a time.
- Groups will later be informed of a more accurate group-by-group schedule in Whatsapp group
- Presentations of the closing seminar will be held on Fri 10.11.2023 between 8-11
- All groups on site throughout the occasion

\* Potential absences only if agreed in advance with the organizers!



# Process

## Day 1

- Case selection
- Introduction to assignment
- Introduction to background materials
- Defining the key challenges in planning
- Brainstorming
- Day report

## Day 2

- Sparring lectures
- Expert interviews and testing the ideas in sparring and clinics
- Concept ideas
- Day report

## Day 3

- Drafting the entry for the practice presentation
- Rehearsal of the practice presentation
- Testing the entry in the practise presentation
- Day report

## Day 4

- Report and presentation
- Finalizing the entry

# Questions

- Groups have the opportunity to submit specific questions in terms of mission statement, evaluation criteria and rules in writing by email [vili.ampuja@ramboll.fi](mailto:vili.ampuja@ramboll.fi)
- Questions are compiled and answers sent to project managers of all teams
- Questions about the course of the competition, as well as a discussion possible also on the WhatsApp group
  - The group can be joined by an invitation link, which is delivered to everyone also by email



## Contact details

### **Vili Ampuja**

+358 50 431 8274

[vili.ampuja@ramboll.fi](mailto:vili.ampuja@ramboll.fi)

### **Jukkis Pitkänen**

+358 40 7384190

[jukkis@ramboll.com](mailto:jukkis@ramboll.com)

### **Inna Ampuja**

+358 50 431 8273

[inna.ampuja@ramboll.fi](mailto:inna.ampuja@ramboll.fi)

### **Kimmo Heiniaho**

+358 40 842 1471

[kimmo.heiniaho@ramboll.fi](mailto:kimmo.heiniaho@ramboll.fi)

# GOOD LUCK!

