

The logo for Ramboll, featuring the word "RAMBOLL" in a bold, blue, sans-serif font. The letter "O" is stylized with a white checkmark inside it. The logo is set against a white rounded rectangular background.

RAMBOLL

Bright ideas.  
Sustainable change.

# Company Presentation

Ramboll Management Consulting





# Ramboll Management Consulting in brief

- A leading management consultancy in the Nordics, voted 'Best Consulting Brand' in Denmark 3 years in a row
- Fast-growing presence in the UK, the US, Belgium and not least Germany. Brandeis top-rated consultancies acquired in 2023
- Providing strategic guidance and support on sustainability transition to clients in key sectors
- Building on a Nordic heritage, we promote a collaborative, people-centric, and a hands-on approach to consulting

750

Some 750 passionate employees in 8 countries

17

Offices in the Nordics, Germany, US, UK and Belgium

# A part of Ramboll

- Creating sustainable solutions since 1945
- Founded in Copenhagen, Denmark by Børge Rambøll and Johan Hannemann
- Owned by the Ramboll Foundation, ensuring long-term and purpose-driven development
- Cross-discipline work to tackle interlinked challenges

35 | Present in  
35 countries

18 000 | +18 000  
Experts



# Our ambition is to become a global leader within four unifying sustainability themes

Decarbonise  
for net zero



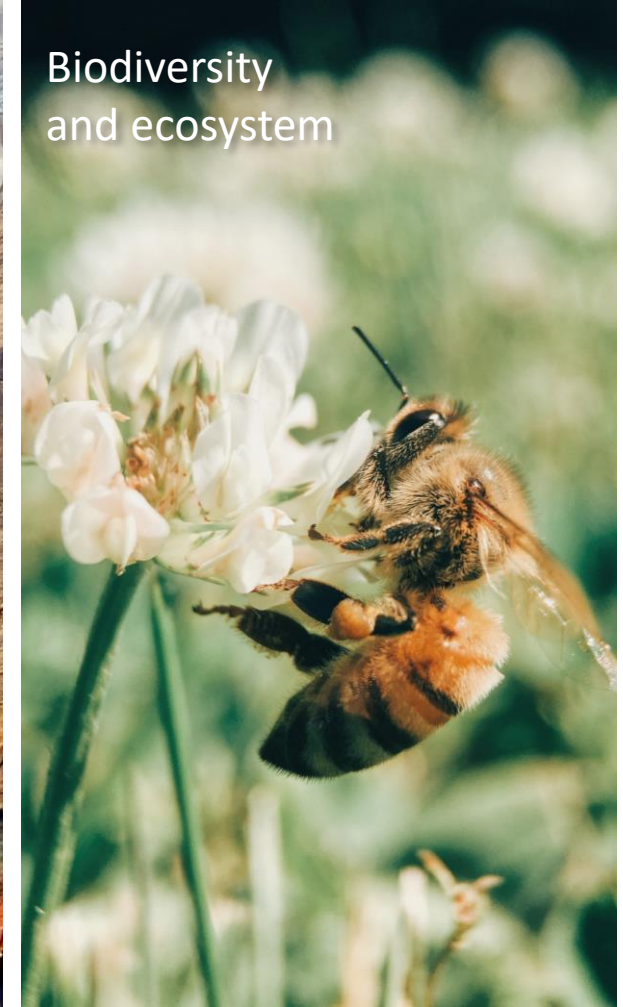
Resilient societies  
and liveability



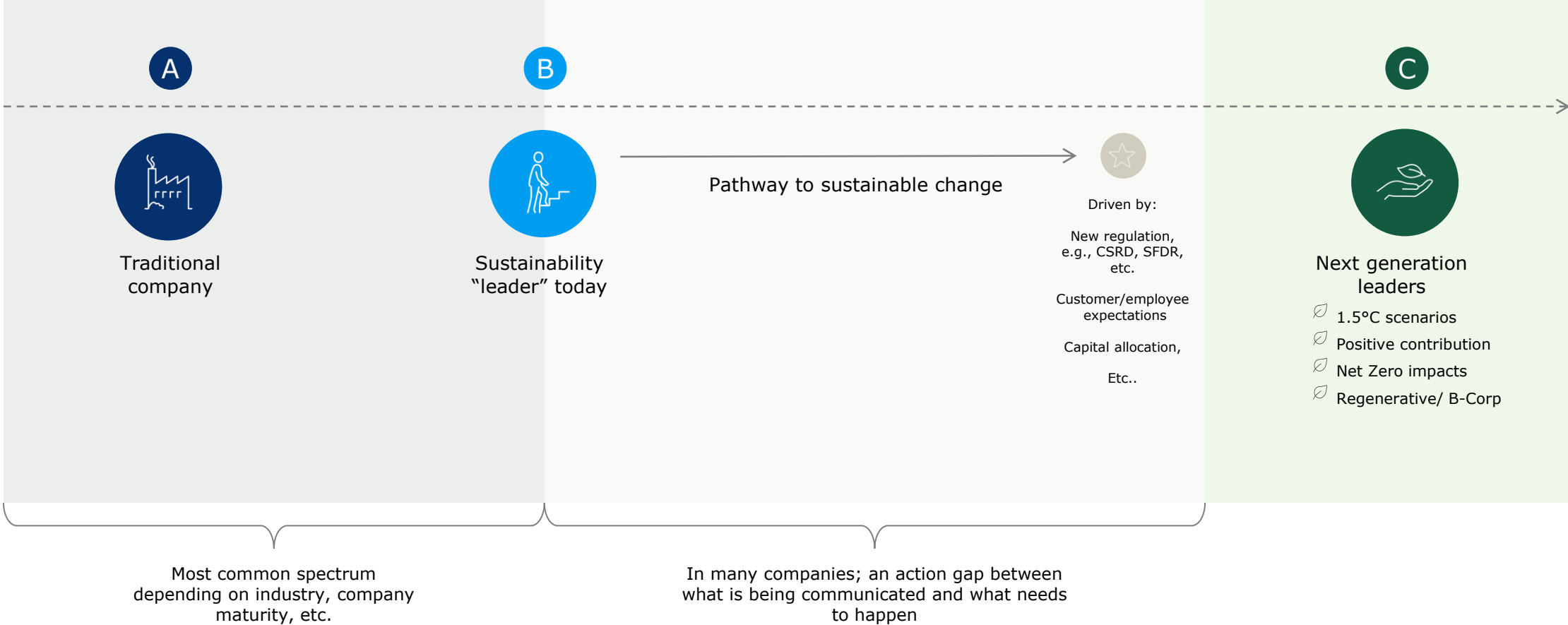
Resource management and  
circular economy



Biodiversity  
and ecosystem



# There is a gap in the world between where we are today and a sustainable future



We help clients  
navigate their individual  
pathway for change



An aerial photograph of a large-scale floating solar farm. The solar panels are arranged in a grid pattern on a vast body of water. In the center of the array is a small, rectangular island-like structure with a green roof and some buildings. The sky is bright blue with wispy white clouds, and the sun is visible, creating a shimmering reflection on the water's surface. In the far distance, a line of wind turbines is visible on the horizon.

Let's collaborate and co-create  
a more sustainable future

# How to: A valuable partner for change

- Interdisciplinary links between our management consultants, economic and environmental specialists, and technical experts allow for a hands-on approach going from strategy to implementation
- We build a close and trustful collaboration with our clients and equip you to navigate the complexity of sustainable change throughout the organisation's strategy, structures, processes, and culture

## Decarbonisation & Climate Resilience

### Our services include

- Decarbonisation & climate action strategy
- Carbon roadmaps and implementation
- Resilience planning & action
- Implementation of Science-Based Targets

## Circular Economy

### Our services include

- Circular strategy development
- Commercial model support
- Policy & regulation interpretation
- EU Taxonomy alignment

## Sustainable Economics & ESG

### Our services include

- Development of ESG investment strategy
- Economic impact assessment & evaluation
- Sustainable finance/ESG disclosures
- EU Taxonomy & CSRD

## Resilient Societies & Enterprise

### Our services include

- Risk diagnosis
- Impact assessment
- Resilience strategy & planning
- Cost benefit analysis & financial assessments

## Social Sustainability

### Our services include

- Just transition strategy & planning
- Human rights & responsible sourcing
- Equality, diversity & inclusive growth
- Social finance & investments (SRI)

## ...Infused by Digital

### Our services include

- Digital strategies
- Data analytics
- SurveyXact
- CSRD Navigator tool



# We help our clients through the entire transformation



Analyse &  
Understand



Design &  
Plan



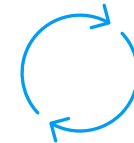
Implement &  
Transform



Drive &  
Sustain



Report &  
Communicate



Evaluate &  
Refine



# We put the client's needs first. Always.

We take point-of-departure in the client's special situation and context rather than our methods and tools.

With a people-centric approach, we partner with clients in both the public and private sectors.

52

Net Promoter Score (NPS)

4.6/5

Project Satisfaction Survey (PSS)

**RAMBOLL**

Bright ideas.  
Sustainable change.

Bright  
ideas.  
Sustainable  
change.

**RAMBOLL**